



Heathen

HEATHEN



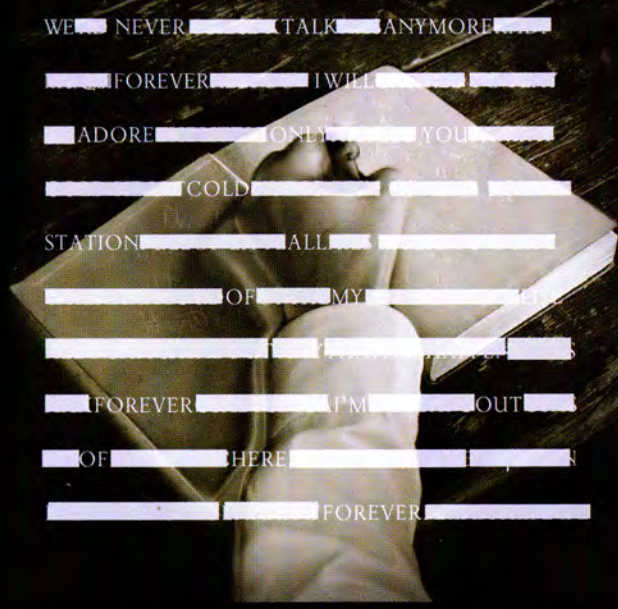
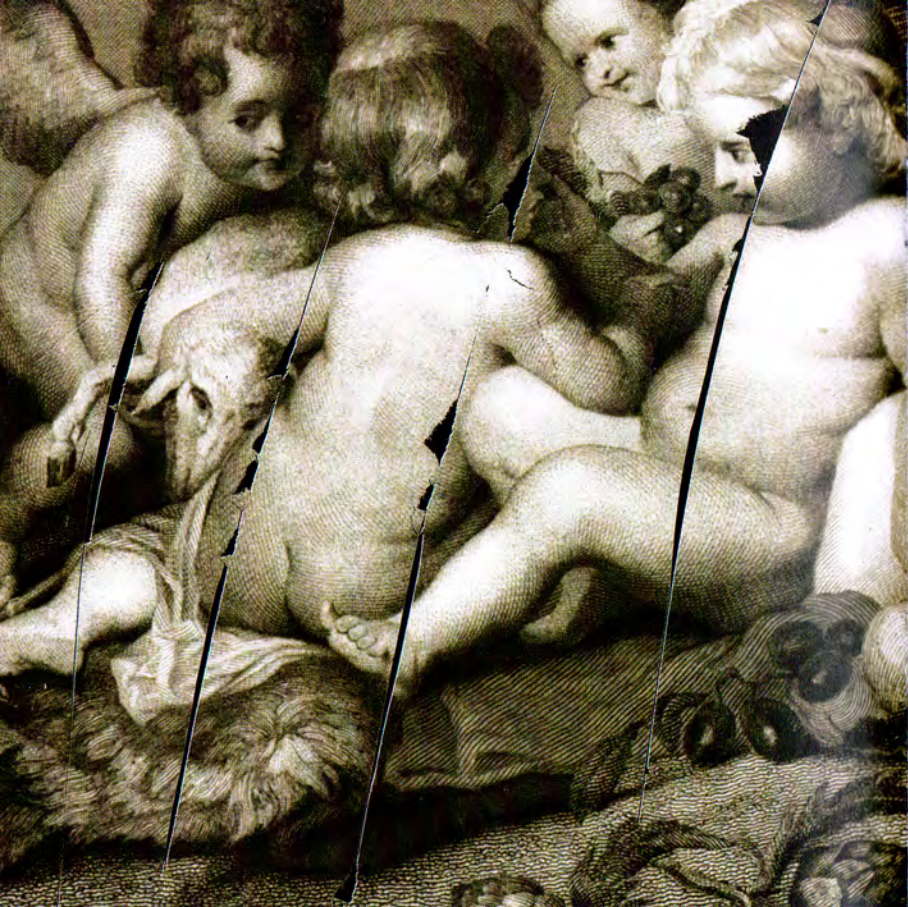
~~& WHEN THE SUN SLOW~~

~~AND THE RAYS HIGH~~

~~I CAN SEE IT NOW~~

~~I CAN FEEL IT DE~~





WE NEVER TALK ANYMORE

FOREVER I WILL

ADORE ONLY YOU

COLD

STATION ALL

OF MY

FOREVER I'M OUT

OF HERE

FOREVER



. SOME . OF . US . WILL . ALWAYS . STAY BEHIND .
. DOWN . IN . SPACE . IT'S . ALWAYS . 1982 .
. THE . JOKE . WE . ALWAYS . KNEW .





~~FOR IN TRUTH, IT'S THE BEGINNING OF NOTHING~~

~~AND NOTHING HAS CHANGED~~

~~EVERYTHING HAS CHANGED~~



THE GENERAL
THEORY
OF RELATIVITY

ALBERT EINSTEIN

The Interpretation
of Dreams

Sigmund Freud

The Gay Science

Friedrich Nietzsche

~~DAVID BOWIE . KEYBOARDS . GUITARS . SAX . STYLPHONE~~
~~BACING VOCALS . DRUMS ||| TONY VISCONTI . BASS . GUITARS~~
~~RECORDERS . STRING ARRANGEMENTS . BACKING VOCALS ||| MATT~~
~~CHAMBERLAIN . DRUMS . LOOP PROGRAMMING . PERCUSSION |||~~
~~DAVID TORI . GUITARS . GUITAR LOOPS . OMNICHORD~~
~~THE SCORCHIO QUARTET - GREG KITZIS . 1ST VIOLIN | MEG OKURA . 2ND VIOLIN | MARTHA~~
~~MOOKE . VIOLA | MARY WOOTEN . CELLO | ADDITIONAL MUSICIANS - CARLOS ALOMAR .~~
~~GUITAR | STERLING CAMPBELL . DRUMS AND PERCUSSION | LISA GERMANO . VIOLIN | GERRY~~
~~LEONARD . GUITAR | TONY LEVIN . BASS | MARK PLATI . GUITAR AND BASS | JORDAN RUDESS .~~
~~KEYBOARDS | THE BORNEO HORNS . LENNY PICKETT AND STAN HARRISON AND STEVE ELSON |~~
~~KRISTEEN YOUNG . VOCALS AND PIANO | SPECIAL THANKS TO PETE TOWNSHEND .~~
~~GUITAR [SLOW BURN] | DAVE GROHL . GUITAR [I'VE BEEN WAITING FOR YOU]~~

DAVE GROHL APPEARS COURTESY OF ROSWELL RECORDS, INC./THE RCA RECORDS LABEL | PETE TOWNSHEND APPEARS COURTESY OF EFL P/E RECORDING PRODUCTIONS LTD. || RECORDED AT ALLAIRE STUDIOS, SHOKAN, NY | ENGINEER : TONY VISCONTI | 2ND ENGINEERS : BRANDON MASON AND TODD YOS | RECORDED AT LOOKING GLASS STUDIOS, NEW YORK, NY | ENGINEER : TONY VISCONTI | 2ND ENGINEERS : HECTOR CASTILLO AND CHRISTIAN RUTLEDGE | MEDIA : STUDER® 16 TRACK ANALOG TAPE, EMAGIC® SOFTWARE, PRO TOOLS® | HARDWARE : APOGEE® 24-BIT A/D CONVERSION, MAC® G4 COMPUTERS, NEVE®, SSL® AND MCI® CONSOLES | PRODUCED BY DAVID BOWIE AND TONY VISCONTI *** | MIXED AT LOOKING GLASS STUDIOS A AND B BY TONY VISCONTI | ***EXCEPT "EVERYONE SAYS "HI" | PRODUCED BY BRIAN RAWLING AND GARY MILLER FOR BRIAN RAWLING PRODUCTIONS | MIXED BY GARY MILLER AT SUB-URBAN STUDIOS, LONDON | VOCALS AND GUITARS PRODUCED AND RECORDED BY TONY VISCONTI AT LOOKING GLASS STUDIOS, NEW YORK, NY | PROGRAMMING : GARY MILLER | GUITARS : GARY MILLER AND CARLOS ALOMAR | KEYBOARDS : DAVE CLAYTON | BASS : JOHN READ | PERCUSSION : SOLÁ ÁRINGBOLÁ | ELECTRIC CELLO : PHILIP SHEPPARD | ASSISTANT : JEZ LARDER | *** "AFRAID" PRODUCED BY DAVID BOWIE AND MARK PLATI | ENGINEERED BY MARK PLATI | ASSISTED BY HECTOR CASTILLO | MIXED BY TONY VISCONTI | MASTERED AT THE LODGE, NEW YORK, NY | ENGINEER : EMILY LAZAR | | PHOTOGRAPHY : MARRUS KLINKO | POST PRODUCTION : INDRANI | ART DIRECTION AND DESIGN : BARNBROOK DESIGN | PAINTINGS © PHOTODISC/GETTY IMAGES | | LYRICS FROM "SUNDAY," "SLIP AWAY," "5.15 THE ANGELS HAVE GONE" AND "HEATHEN (THE RAYS)" © 2002 NIPPLE MUSIC (BMI) ADMIN. BY RZO MUSIC, INC. LYRICS REPRINTED BY PERMISSION. ALL RIGHTS RESERVED. INTERNÁTIONAL COPYRIGHT SECURED. | LYRICS FROM "CACTUS" © 1988 RICE AND BEANS MUSIC (BMI). ALL RIGHTS RESERVED. USED BY PERMISSION. | LYRICS FROM "I'VE BEEN WAITING FOR YOU" © 1968 BROKEN ARROW MUSIC CORP. (ASCAP). ALL RIGHTS RESERVED. USED BY PERMISSION. | "I WOULD BE YOUR SLAVE," "SLOW BURN," "AFRAID," "EVERYONE SAYS "HI," AND "A BETTER FUTURE" PUBLISHED BY NIPPLE MUSIC (BMI) ADMIN. BY RZO MUSIC, INC. | "I TOOK A TRIP ON A GEMINI SPACESHIP" PUBLISHED BY EMI UNART CATALOG, INC./FINIUS MYTH MUSIC (BMI)



© 2002 ISO Records under license to Sony Music Entertainment Inc. / © 2002 ISO Records under license to Sony Music Entertainment Inc. / "Columbia" is the exclusive trademark of Sony Music Entertainment Inc. / as a trademark of Sony Music Entertainment Inc. / WARNING: All Rights Reserved. Unauthorized duplication is a violation of applicable laws.

508222000