

The Popular Hi-Tech Autofocus SLR

5000



MINOLTA

The world's easiest SLR.
Only the human eye focuses faster.





The Minolta 5000

It makes photographic magic happen so easily, so quickly.

Each day of your life, hundreds—or thousands—of opportunities to seize the memorable moment occur. Photographic opportunities to be prized for posterity that happen in the split-second twinkling of an eye... then vanish forever. You can't afford to miss these magical moments when they unexpectedly come.

The Minolta 5000 won't let you miss these times when life moves a little too fast. When there is not time to make camera settings. Or focus. Or advance the film. Because the Minolta 5000 snaps the image you see in sharp focus, adjusts for lighting and takes the picture in the blink of an eye. You'll always get sharp pictures because this camera won't shoot unless the picture is sharp. And you're always ready to take the next picture because the film is automatically advanced after each photo you take.

Best of all, the Minolta 5000 makes all this happen so easily, so quickly, and so precisely that it'll change the way you used to think about SLRs...and maybe even about photography itself!

The Minolta 5000: there's never been such an easy 35mm SLR to use, to enjoy!



The Minolta 5000's Hi-Tech autofocus system

Only the human eye focuses faster.

Your world's in constant motion. Moments you wish to remember appear for an instant and then are gone forever. These are the times when you need the Minolta 5000's Hi-Tech autofocus system working for you. Just aim and press the camera's operating button! The Minolta 5000 responds...faster than even the most experienced photographer can focus manually.

The Minolta 5000's focus-priority autofocusing assures that subjects will always be in focus before the shutter releases. And its built-in motor drive lets you take action sequences up to 1.5 frames per second. The Minolta Hi-Tech autofocus system: so precise, so fast and so easy to use that you'll never again let a once-in-a-lifetime moment slip away, unrecorded.





Automatic Multi-Program Selection

It makes all exposure decisions and settings for you.

Exposure automation is another area where the Minolta 5000 goes beyond any other camera to simplify photography. You just aim and shoot. The Minolta 5000 automatically selects the right combination of aperture and shutter speed for the best exposure in virtually any kind of lighting.

Furthermore, the Minolta 5000 automatically selects either its wide angle, standard, or telephoto program according to the type of Minolta AF lens you are using. Even when zooming with a Minolta AF zoom lens, your Minolta 5000 automatically changes its program selection as you move from wide angle to telephoto and back. Automatic Multi-Program Selection's great...it saves you vital seconds when a great picture-taking opportunity presents itself!





AF-assist flash photography

So speedy and effortless that it'll change the way you shoot flash pictures.

When you add a Minolta Program Flash to your Minolta 5000, you'll be able to shoot precisely-autofocused pictures in low light situations...even in total darkness. And without making any settings—focus or exposure—on camera or flash.

The Minolta Program Flash has AF-assist light to help fix focus precisely. And the camera's special flash metering system makes extremely sensitive light measurements off the film itself to provide consistently excellent flash photo results. All with just pressing the camera's operating button! And for flash action photography at its best, your Minolta Program Flash 1800AF recharges quickly. There's no waiting...and you're ready to shoot again right away!



Instant ready/ instant shoot

This is what helps make the Minolta 5000 so easy to use.

You'll be amazed how easy the Minolta 5000 is to operate. For Minolta engineering expertise has simplified camera controls and helped eliminate error in common camera handling procedures. For superior results from your very first roll of film, all you have to do is follow these simple Load and Shoot steps.



Load

Film loading has never been simpler! Just position the film cartridge and leader, then close the back. The Minolta 5000 automatically advances the film to the first frame. And with DX-coded film, the film speed will be automatically set for you, too.



Shoot

To take pictures, simply aim and press the operating button. The Minolta 5000's Hi-Tech autofocus system snaps the subject into sharp focus as the correct exposure is set, and the shutter releases. You're always assured of great pictures because the camera won't shoot until the image is sharp. And your film automatically advances after each shot so you're always ready to capture that next important shot.

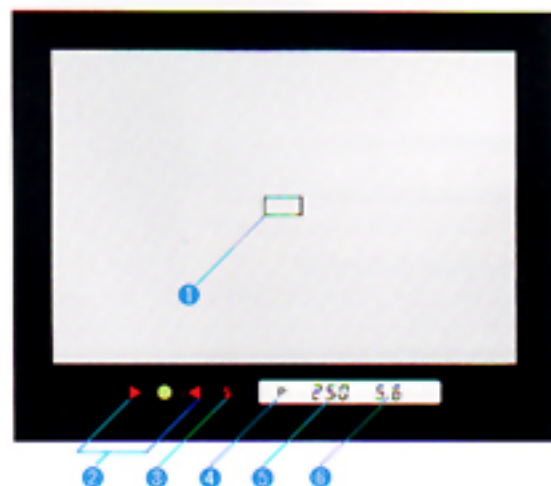
Visual automation checks

For making the taking free'n easy.

The moment you turn your Minolta 5000 on, it's all ready to shoot. That's because there's often no time for focusing or exposure adjustments when a picture-taking opportunity presents itself. Your camera's readiness to shoot can be confirmed either in its viewfinder or top-mounted LCD data panel... and now go make some photographic magic!



- 1 Focus frame
- 2 Focus signals
- 3 Flash signal
- 4 Mode indications
- 5 Shutter speed
- 6 Aperture

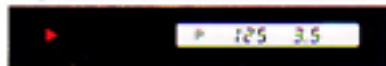


LED focus signals

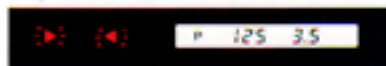
subject is in focus



subject too close to lens

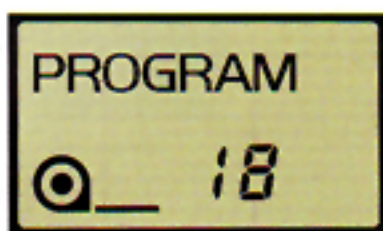


subject contrast too low



Full-display viewfinder

All essential picture-taking data is displayed in the Minolta 5000's viewfinder, just below the bright focusing screen. You won't have to look elsewhere to shoot...a great aid to reading quickly. And to creativity! Simply frame the subject in the focus frame as you touch the camera's operating button, look for the in-focus indication and shoot! The viewfinder's digital display even automatically lights up in low light conditions to continue assisting you by day or night, indoors or out.



LCD data panel

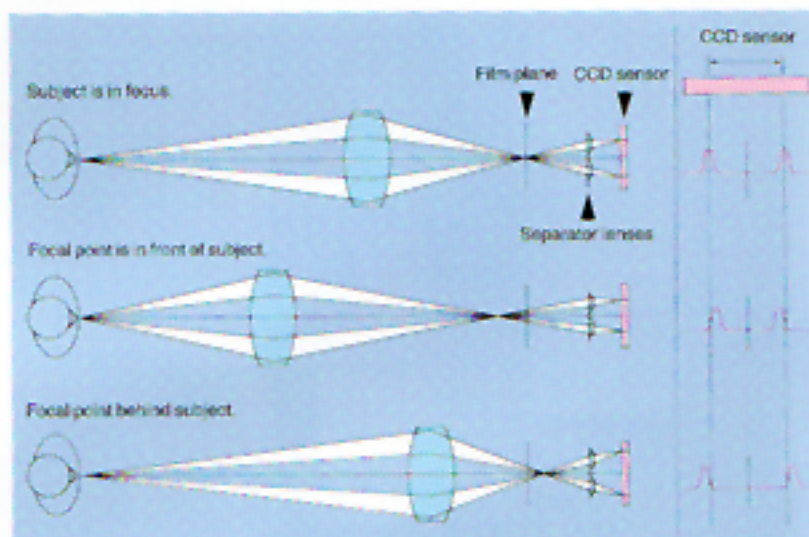
The Minolta 5000's large, top-mounted LCD data panel provides important photographic information, too. You'll see that you're in Program mode...that your film is correctly loaded...and which film frame you're about to shoot (as seen in the large photograph above).

Sophisticated camera technology

It's what makes the Minolta 5000 the world's easiest SLR.

Minolta Hi-Tech autofocus system

The Minolta 5000's incredible SLR autofocus capability is provided by the Minolta Hi-Tech Autofocus System. A ROM IC in each Minolta AF lens supplies vital focusing data to the camera, even as the focal length of a Minolta AF zoom lens changes from wide angle to telephoto and back. Advanced autofocus technology such as phase detection focusing and direct digital control contribute speed and accuracy as twin separator lenses project dual images of the subject in the viewfinder frame onto CCD sensors, compare these signals to determine precise focus and instantly drive the lens to its correct in-focus position. All sequences are controlled by two onboard microcomputers. Best of all, the Minolta 5000's body-integral design packs all these elements into its slim, lightweight body to provide a balance and handling that is truly superior!

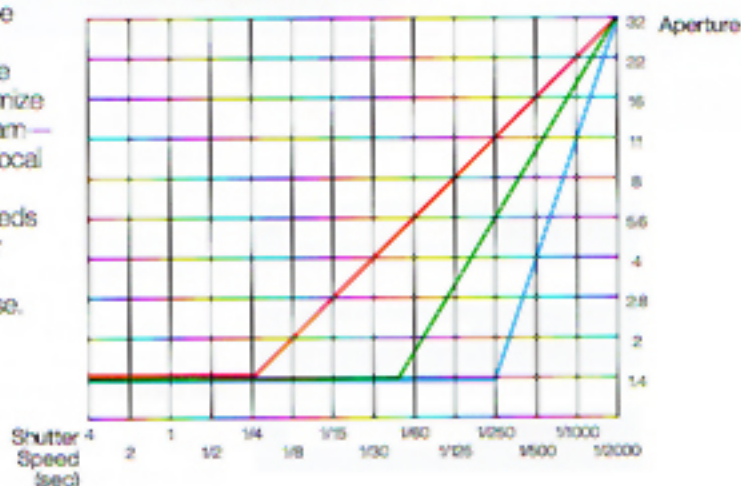


Automatic Multi-Program Selection

The Minolta 5000 automatically selects the correct program for any Minolta AF lens in use. Standard program is selected for focal lengths between 35mm and 105mm; action-weighting assures optimum combinations of aperture and shutter speed, ideal for "point and shoot" photography. Wide program is selected for focal lengths below 35mm; aperture settings are weighted to maximize depth-of-field. And Tele program—automatically chosen when focal lengths exceed 105mm—emphasize higher shutter speeds to counter potential camera or subject blur so prevalent with conventional telephoto lens use.

AUTOMATIC MULTI-PROGRAM SELECTION

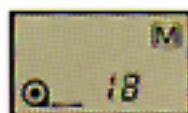
- Standard Program
- Wide Program
- Tele Program



The Minolta 5000's creative manual operation

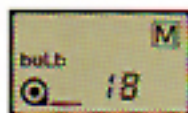
Unlock the door to even greater creativity!

Slide the Minolta 5000's control key cover to the left and you'll find the keys to a new world of exciting creativity! This is for those times you wish to take over camera control for yourself...to experiment on your own...to reach new heights of creativity in your picture taking.



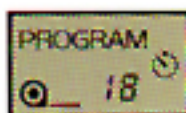
Manual exposure mode

Change the mood of your photograph by deliberately over- or underexposing it. Select any shutter speed and aperture you wish...go ahead, it's easy! Viewfinder and data panel indicators help remind you what you're doing, too.



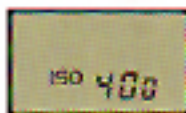
Bulb

Want to capture the colorful flow of nighttime traffic lights? Or the pattern of stars crossing a darkened sky? These, and many other creative choices, are yours when you take long exposures with the Minolta 5000's bulb mode. The LCD data panel's convenient timer tells you exactly how long an exposure you're taking.



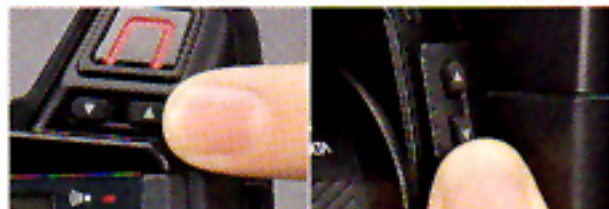
Self-timer

Use the Minolta 5000's self-timer so that you can join your friends and have a group picture with everyone in it. A ten second count-down begins, accompanied by an audible signal that changes tone so that everyone knows when to smile.

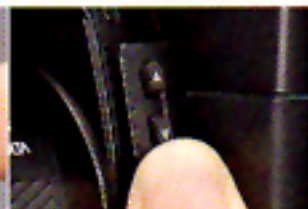


Manual ISO setting

Occasionally you may wish to change your film speed setting. A common example: doubling your film speed when shooting extremely fast-moving subjects. Select any common film speed between ISO 25 and ISO 6400.



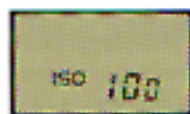
setting shutter speed



setting aperture

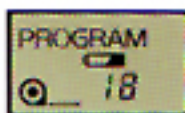


Other LCD data panel indications



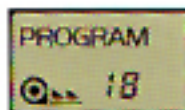
Automatic film speed setting

You don't have to set your film speed, as the Minolta 5000 automatically sets the film speed of all DX-encoded films. The set film speed is displayed momentarily after loading, or any time when ISO key is pressed.



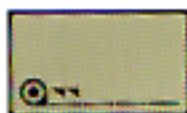
Battery power indication

The symbol of a blinking battery appears both in the LCD data panel and the viewfinder display whenever the camera's main battery power is low and need to charge with new batteries.



Automatic film winding

As the film winds, you'll notice some film direction arrows in the Minolta 5000's LCD data panel display and that the frame counter changes to the next film frame number.



Automatic film rewinding

During film rewinding, the film direction arrows reverse direction and blink. And the film remaining indicator disappears in one-quarter increments as the film is being rewound.



Other Minolta 5000 features



- 1 Operating button
- 2 Shutter speed keys
- 3 Accessory shoe
- 4 Data panel
- 5 Rewind switch
- 6 Rewind release
- 7 Main switch



Main switch

Moving the camera's main slide switch turns the camera on with or without audible warnings, or shuts off and locks all camera functions.



Touch switch

LCD displays in the viewfinder come on as soon as finger contact is made with the camera's operating button. Displays remain visible for ten seconds after finger contact ends, conserving battery power.



Lens mount

The Minolta 5000's "A" lens mount provides the electronic interlock between camera and lens that lets autofocus and exposure setting systems operate flawlessly.



Film window

You can instantly confirm whether film is loaded and what type of film it is.



Focus mode switch

Select either autofocus or manual focusing. Viewfinder indicators will keep you informed of precise focus in either mode.



Handgrip

Comfortable handling grips on the front and back of the camera allow you to aim and shoot with one hand. The rear handgrip also houses the main battery supply: four slim, 1.5v batteries that are easily and quickly exchanged.



- ① Battery holder
- ② Lens mount
- ③ Mirror
- ④ Aperture keys
- ⑤ AF coupler
- ⑥ Lens release
- ⑦ Focus mode switch
- ⑧ Back cover release
- ⑨ Remote control terminal

Backlight compensation

When strong light is coming from behind your subject, you may wish to use the Minolta 5000's backlight compensation feature to automatically lighten shadowed areas and improve subject detail. Operation is pushbutton simple, helping you master difficult lighting situations with great ease!



with backlight compensation



without backlight compensation



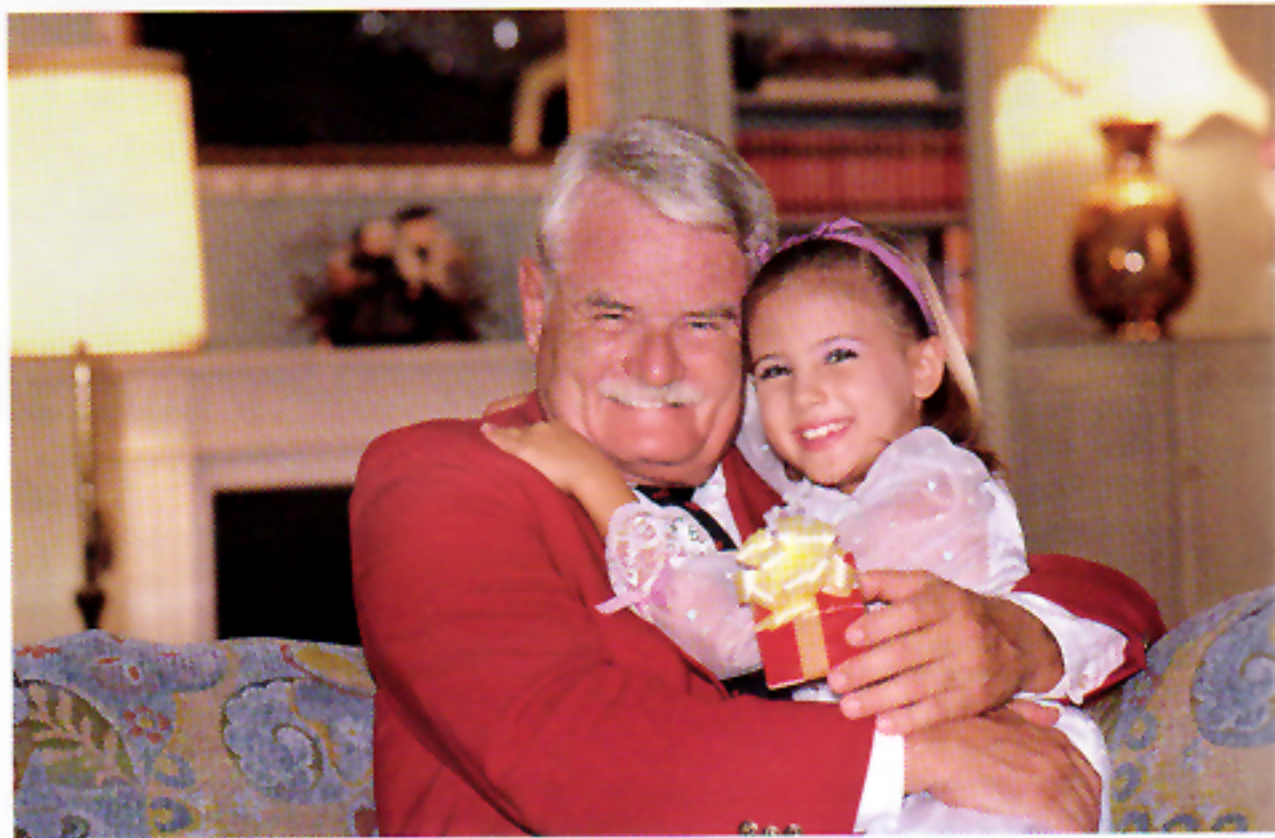
Focus hold

For even more creative freedom in composing your pictures, reposition your subject anywhere within the film frame and still retain sharp autofocus on the subject by using the Minolta 5000's focus hold feature. Operation is extremely simple and fast. And the results are superb! Perfect subject focus to the left, to the right, up or down ...anywhere you wish in your picture!



The Minolta Program Flash 1800AF

For better flash pictures, easier than ever before!



AF-assist flash

When you team your Minolta 5000 up with the Minolta Program Flash 1800AF, magic begins! For the Program Flash 1800AF's AF-assist function provides precise auto-focusing in low light conditions or even total darkness. How? By firing bursts of LED illumination light from its AF illuminator to ensure precise autofocusing. Best of all, you have to make no settings at all!

Quick recharging

Use a long-life lithium battery pack in your Minolta Program Flash 1800AF and two tremendous benefits are yours: your flash will recharge in seconds to let you take fast action flash pictures, one right after another and you'll have enough battery power for approximately 5 years of average flash use. You can also use regular AAA-size, 1.5v alkaline-manganese batteries, too. And instant power on/automatic power off features help conserve battery life.

Program flash/TTL metering

With your Minolta 5000 and Minolta Program Flash 1800AF, you make no settings, no adjustments. Focus is automatic. The flash fires and a sensitive meter reads the amount of light that bounces off the subject, comes back through the lens and strikes the film. At the precise moment for best exposure, flash firing is stopped. In the camera viewfinder, you'll then see an indication that tells you you've just taken a good flash picture. All of this is fully automatic!





with automatic fill flash



without flash

Automatic fill-flash

Use your Minolta Program Flash 1800AF outdoors in the daytime, too. It comes in especially handy when you're shooting a subject in shadows. Both your Minolta 5000 and Minolta Program Flash 1800AF team up to automatically add just enough flash exposure to the ambient light in order to brighten shadowed portions of the scene without washing out important highlight details such as skin tones. And with no settings whatsoever on your part!

Other Minolta Program Flash choices

There are two other Minolta Program Flash choices you may wish to consider. The Minolta Program Flash 2800AF is power packed, yet is still compact and lightweight. The Minolta Program Flash 4000AF is most powerful flash and has many versatile, professional-use features such as automatic power zoom, two way bounce head, variable power selection and an illuminated LCD panel.



Program Flash
2800AF



Program Flash
4000AF

The Minolta Data Back 70



The Minolta Data Back 70 provides you with the capability of imprinting the time or date on each film frame. The Data Back 70 quickly and easily replaces the Minolta 5000's standard back and its automatic calendar and quartz clock are extremely easy to read. You also have the option of printing the date either month/day/year or day/month/year.



Minolta AF lenses

A world of pleasure and creativity awaits you.



WIDEANGLE LENSES

For landscapes, natural scenery, group shots and other pictures that have a horizontal sweep to them, Minolta AF wideangle lenses provide extraordinarily beautiful results. Choosing a Minolta AF wideangle lens will give your pictures a feeling of almost three-dimensional breadth and depth.

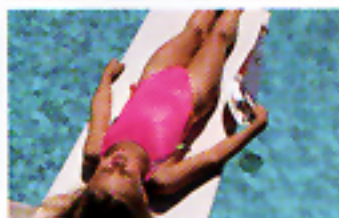
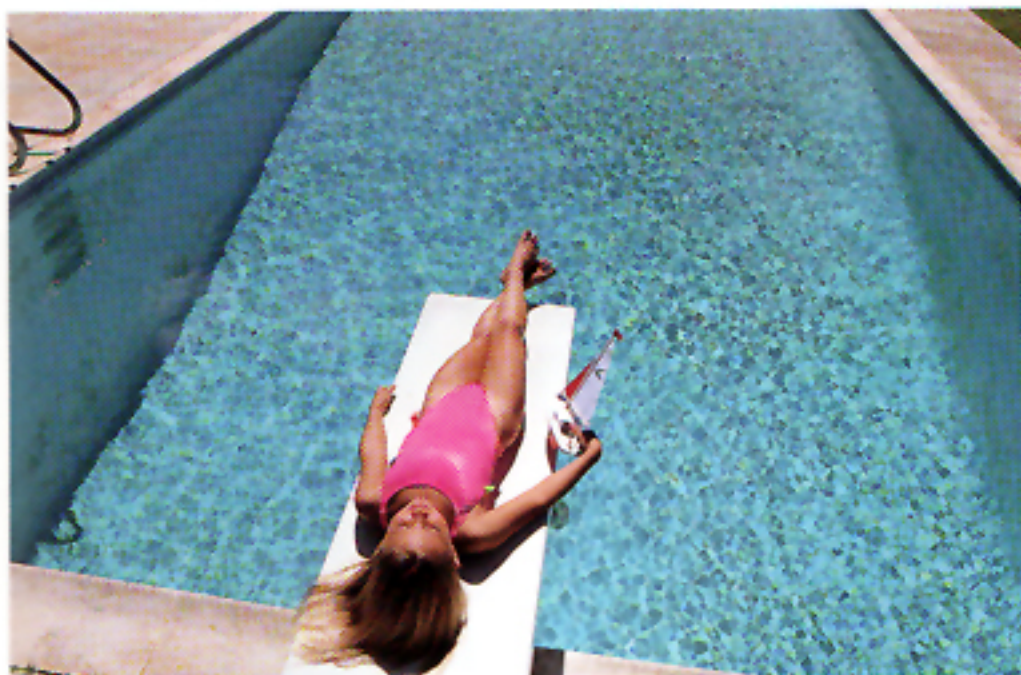


TELEPHOTO LENSES

With a Minolta AF telephoto lens you can get closer to subjects that are far away. You can also isolate a subject from its surroundings, perfect for candid portraits, sports, news or nature photography. A Minolta AF telephoto lens will provide many new creative opportunities!

STANDARD LENSES

Selecting one of the Minolta AF standard lenses makes good sense for many reasons. They provide extremely sharp, clear images for most types of candid photography. They are extremely compact and lightweight, making camera handling easier.



ZOOM LENSES

With a Minolta AF zoom lens you can easily crop your picture in your viewfinder. Zoom in to fill the frame with your subject, or zoom out to include more of the background. Minolta AF zoom lenses give you incredible creative versatility by day or night, indoors or out, with flash or by natural light.



MACRO LENS

With the Minolta AF 50mm f/2.8 Macro lens you can take life-sized, accurately-autofocused pictures of miniature subjects without any other special equipment. Think of the possibilities! There's a whole new world of photographic magic awaiting your discovery with this versatile Minolta AF Macro lens.



What kind of a lens should I choose for my Minolta 5000?

The Minolta AF lens collection is the most extensive array of SLR autofocus lenses in the world. Each will mate perfectly with your Minolta 5000 to provide you with years and years of dependable performance. Generally speaking, our 24mm and 28mm Minolta AF lenses are often used for outdoors photography to faithfully reproduce the dramatic sweep of natural subjects. Our 50mm standard lenses are general purpose, versatile in many different types of shooting situations. The three Minolta AF telephoto lenses—135mm, 300mm and 600mm—are great for nature and sports pictures when you are often some distance from your subject. And for the greatest versatility, you may wish to choose one of seven Minolta AF zoom lenses: they can combine the capabilities of several different lenses in one.



24mm



28mm



35mm



50mm



70mm



85mm



105mm



135mm



200mm



210mm



300mm



600mm



AF 24mm f/2.8
Minimum focus: 0.25m
Filter-mount diameter: ϕ 55mm
Dimensions: ϕ 65.5 x 44mm
Weight: 215 g



AF 28mm f/2.8
Minimum focus: 0.3m
Filter-mount diameter: ϕ 48mm
Dimensions: ϕ 65.5 x 42.5mm
Weight: 200 g



AF 50mm f/1.4
Minimum focus: 0.45m
Filter-mount diameter: ϕ 48mm
Dimensions: ϕ 65.5 x 38.5mm
Weight: 235 g



AF 50mm f/1.7
Minimum focus: 0.45m
Filter-mount diameter: ϕ 48mm
Dimensions: ϕ 65.5 x 38.5mm
Weight: 185 g



AF 135mm f/2.8
Minimum focus: 1m
Filter-mount diameter: ϕ 55mm
Dimensions: ϕ 65.5 x 83mm
Weight: 365 g



AF 90mm f/2.8 Macro
Minimum focus: 0.3m
Maximum magnification: 1X
Filter-mount diameter: ϕ 55mm
Dimensions: ϕ 68.5 x 59.5mm
Weight: 310 g



AF 28-85mm f/3.5-4.5
Minimum focus (macro): 0.8m (0.25m)
Maximum magnification: 0.26X
Filter-mount diameter: ϕ 55mm
Dimensions: ϕ 68.5 x 86.5mm
Weight: 490 g



AF 28-135mm f/4-4.5
Minimum focus (macro): 1.5m (0.25m)
Maximum magnification: 0.26X
Filter-mount diameter: ϕ 72mm
Dimensions: ϕ 75 x 109mm
Weight: 750 g



AF 35-70mm f/4
Minimum focus (macro): 1m (0.32m)
Maximum magnification: 0.25X
Filter-mount diameter: ϕ 49mm
Dimensions: ϕ 68 x 62mm
Weight: 255 g



AF 35-105mm f/3.5-4.5
Minimum focus (macro): 1.5m (0.41m)
Maximum magnification: 0.26X
Filter-mount diameter: ϕ 55mm
Dimensions: ϕ 68.5 x 87mm
Weight: 495 g



AF 70-210mm f/4
Minimum focus (macro): 1.1m (1.1m)
Maximum magnification: 0.266X
Filter-mount diameter: ϕ 55mm
Dimensions: ϕ 72.5 x 162mm
Weight: 690 g



AF 100-200mm f/4.5
Minimum focus: 1.9m
Filter-mount diameter: ϕ 49mm
Dimensions: ϕ 69.5 x 94.5mm
Weight: 375 g



AF 75-300mm f/4.5-5.6
Minimum focus (macro): 1.5m (1.5m)
Maximum magnification: 0.26X
Filter-mount diameter: ϕ 55mm
Dimensions: ϕ 72.5 x 169.5mm
Weight: 875 g



AF 300mm f/2.8 Apo
Minimum focus: 2.5m
Filter-mount diameter: ϕ 114mm
Dimensions: ϕ 128 x 238.5mm
Weight: 2480 g



AF 600mm f/4 Apo
Minimum focus: 6m
Filter-mount diameter: ϕ 154.5mm
Dimensions: ϕ 168 x 449mm
Weight: 5600 g

Specifications

MINOLTA 5000

Type: 35mm SLR with autofocus, auto multi-program or manual exposure, and auto film transport.

Lens mount: Minolta "A"-type bayonet; accepts all Minolta AF lenses.

Autofocus system: Minolta's TTL phase-detection type; working range: EV 2 to 19 at ISO 100; focus signals in viewfinder for both manual and automatic focusing.

Shutter: Electronically controlled vertical-traverse focal-plane type.

Shutter-speed range: Program mode, stepless 1/2000 to 4 sec. with nearest half-stop setting displayed in viewfinder; manual (M) mode, 1/2000 to 4 sec. in full-stops; "bulb" for long exposures in M mode.

Film-speed settings: ISO 25 to 6400 in third-stop increments; automatic setting for DX-coded film; manual setting possible for non-DX film or to override DX-setting.

Metering: TTL center-weighted averaging type by silicon photocell (SPC) on pentaprism for ambient light; second SPC at bottom of mirror box for TTL flash metering with dedicated flash unit.

Auto-exposure (AE) range: EV -1 to 20 with ISO 100 film and 50/1.4 lens (e.g., 4 sec. at f/1.4 to 1/2000 sec. at f/22).

Exposure modes:

Program: Shutter speed and aperture set according to AE program automatically selected by camera: Wide program for focal lengths shorter than 35mm, Standard for focal lengths from 35mm to 105mm, Tele for focal lengths longer than 105mm.

Manual: Any available shutter speed (in full-stops) and aperture (in half-stops) can be set; settings and correct exposure indicated in viewfinder.

Flash exposure modes: TTL flash metering at film speeds of ISO 25-1000.

Program: Automatic setting of X-sync to 1/100 sec. (1/60 below EV 12) and aperture; automatic fill-in flash with bright subject.

Manual: Any shutter speed 1/100 sec. or slower and any aperture usable; speed automatically reset to 1/100 sec. for manually set speeds 1/125 sec. or faster.

Backlighting compensation button: In program mode, pressing button marked BLC increases exposure by +2 stops.

Viewfinder: Eye-level fixed pentaprism shows 94% of 24 x 36mm film-frame area; magnification 0.85X with 50mm lens at infinity.

Data displays:

Top panel: Shows exposure mode, film speed, frame number, self-timer operation, "bulb" operation, low-battery warning, and film-transport status.

Viewfinder: Shows exposure mode, shutter speed, aperture, low-battery warning, light level within metering range, and over-/underexposure warning; display illuminated automatically in low light; LED signals indicate focus status, flash charged, and correct flash exposure.

Film transport: Automatic with built-in motor drive: auto threading, auto advance to first frame, continuous film advance with focus-priority shutter release at up to 1.5 frames per second, power rewinding, auto rewind stop.

Operating button: Touch-sensitive switch activates metering and viewfinder LCD displays which remain on for 10 sec. after finger is lifted from button; press halfway to activate autofocus and focus hold; press all the way down to release shutter.

Power: Four AAA-size 1.5v alkaline-manganese batteries power all operations; built-in lithium cell for memory back-up; low power indicated by battery symbol in finder and data panel; sliding main switch with LOCK, ON, and **■■■** positions.

Audible signals: With main switch at **■■■** position, camera "beeps" when subject is in focus; at the end of the roll; during self-timer operation; and as a slow shutter-speed warning in program mode when speed is below: 1/30 sec. with lenses shorter than 35mm, 1/60 sec. with lenses from 35mm to 105mm, and 1/125 sec. with lenses longer than 105mm.

Controls: Keys to select manual mode, set self-timer, and set film speed; selector keys to set shutter speed, aperture, and film speed; closing control-key cover sets camera to program mode and cancels self-timer operation.

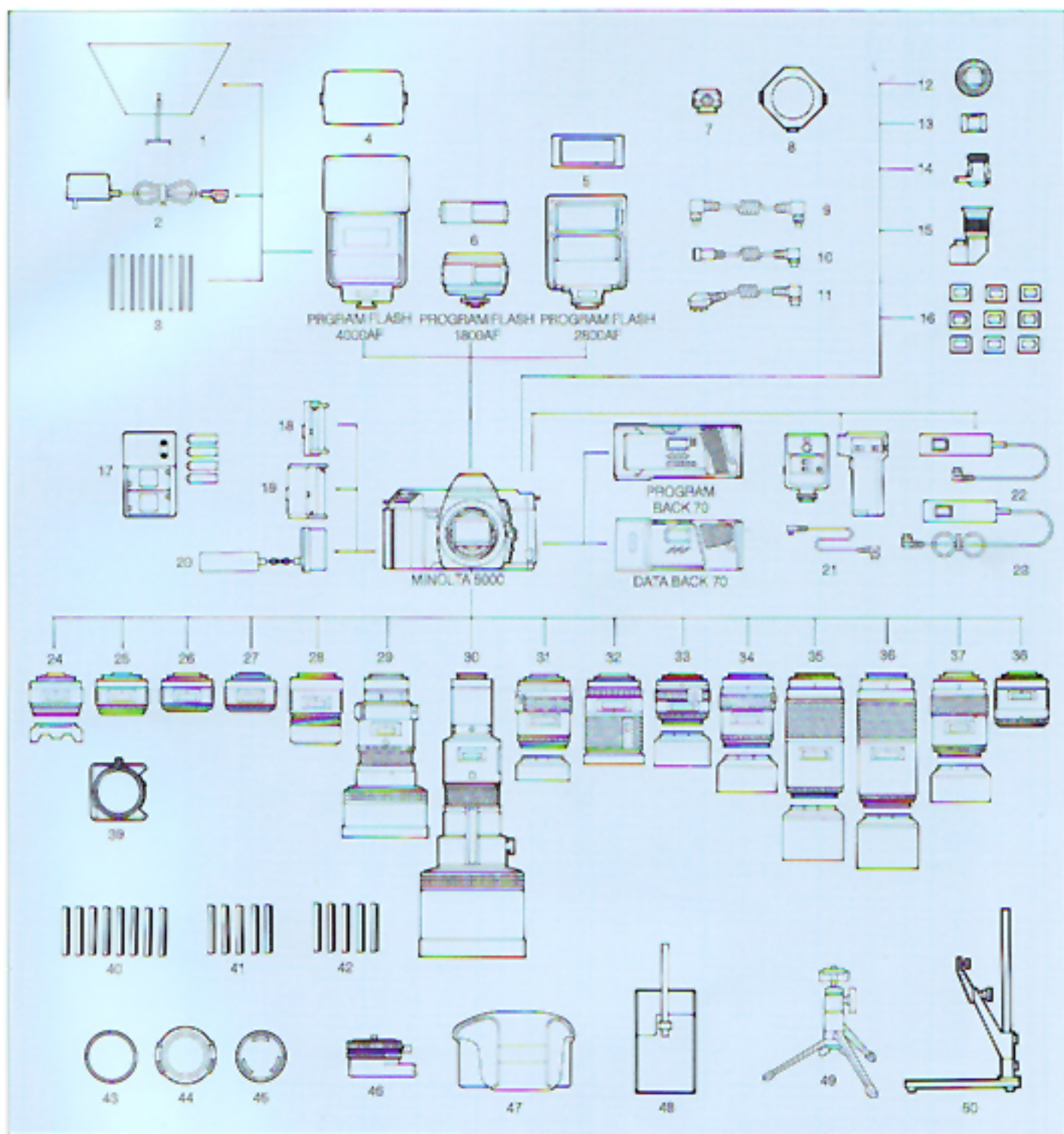
Self-timer: Electronic with 10-second delay; cancelable; operation indicated by audible beeping and countdown in data panel.

Other: Front and rear handgrips, eyepiece cap, film window, remote shutter-release socket, carrying strap.

Size and weight: 52 x 92.5 x 138mm, 550 g without lens and batteries.

Specifications subject to change without notice

Minolta 5000 System



MINOLTA 5000 SYSTEM

- | | | | |
|-----------------------------|-----------------------------------|---------------------------|-----------------------|
| 1. Bounce Reflector II Set | 14. Magnifier Vv | 27. AF 50mm f/1.4 | 40. Filters |
| 2. AC Adapter AC-1000 | 15. Angiefinder Vv | 28. AF 135mm f/2.8 | 41. Portrayer Filters |
| 3. Color Panel Set PS-1000 | 16. Eyepiece Corrector 1000 | 29. AF 300mm f/2.8 Apo | 42. Close-up Lens |
| 4. Wideangle Adapter | 17. Ni-Cd Charger NC-2 | 30. AF 600mm f/4 Apo | 43. Body Cap |
| 5. Wideangle Adapter | 18. Battery Holder BH-70S | 31. AF 28-85mm f/3.5-4.5 | 44. Front Lens Cap |
| 6. Wideangle Adapter | 19. Battery Holder BH-70L | 32. AF 28-135mm f/4-4.5 | 45. Rear Lens Cap |
| 7. Off-Camera Shoe | 20. External Battery Pack EP-70 | 33. AF 35-70mm f/4 | 46. Panorama Head II |
| 8. Tripie Connector TC-1000 | 21. Wireless Controller IR-1N Set | 34. AF 35-105mm f/3.5-4.5 | 47. Camera Case |
| 9. Cable CD | 22. Remote Cord RC-1000L | 35. AF 70-210mm f/4 | 48. Lens Case |
| 10. Cable EX | 23. Remote Cord RC-1000S | 36. AF 75-300mm f/4.5-5.6 | 49. Mini Tripod TR-1 |
| 11. Cable OC | 24. AF 24mm f/2.8 | 37. AF 100-200mm f/4.5 | 50. Copy Stand II |
| 12. Eyepiece Hood EH-7 | 25. AF 28mm f/2.8 | 38. AF 50mm f/2.8 Macro | |
| 13. Eyepiece Cap | 26. AF 50mm f/1.7 | 39. Gelatin-Filter Holder | |



MINOLTA

Minolta Camera Co., Ltd.

Minolta Camera Handelsgesellschaft m.b.H.

Minolta France S.A.

Minolta (UK) Limited

Minolta Austria Gesellschaft m.b.H.

Minolta Camera Benelux B.V.

Belgium Branch
Minolta (Schweiz) AG
Minolta Svenska AB
Minolta Corporation

Head Office
Los Angeles Branch
Chicago Branch
Atlanta Branch

Minolta Canada Inc.

Head Office
Montreal Branch
Vancouver Branch

Minolta Hong Kong Limited
Minolta Singapore (Pte) Ltd.

30, 2-Chome, Azuchi-Machi, Higashi-Ku, Osaka 541, Japan

Kurt-Fischer-Strasse 50, D-2070 Ahrensburg, West Germany
357 bis, rue d'Estienne d'Orves, 92700 Colombes, France
1-3 Tanners Drive, Blakelands North, Milton Keynes, MK14 5BU, England
Amalienstraße 59-61, 1131 Wien, Austria
Zonnebaan 39, 3606 CH Maarssenbroek, P.B. 264, 3600 AG Maarssen, The Netherlands

Stenen Brug 115 - 117, 2200 Antwerpen, Belgium
Riedhof V, Riedstrasse 6, 8953 Dietikon-Zürich, Switzerland
Brännkyrkagatan 64, Box 17074, S-10462 Stockholm 17, Sweden

101 Williams Drive, Ramsey, New Jersey 07446, U.S.A.
3105 Lomita Boulevard, Torrance, CA 90505, U.S.A.
3000 Tollview Drive, Rolling Meadows, IL 60008, U.S.A.
5904 Peachtree Corners East, Norcross, GA 30071, U.S.A.

1344 Fewster Drive, Mississauga, Ontario L4W 1A4, Canada
376 rue McArthur, St. Laurent, Quebec H4T 1X8, Canada
1620 W. 6th Avenue, Vancouver, B.C. V6J 1R3, Canada
Room 208, 2/F, Eastern Center, 1065 King's Road, Hong Kong
10, Teban Gardens Crescent, Singapore 2260