



MINOLTA

# CLE

Finally! A system rangefinder camera with creative aperture priority automatic exposure control!



The Minolta CLE represents a milestone in rangefinder camera history. Many features of this unique auto-exposure camera, such as direct film-plane metering for both AE and autoflash operation plus LED viewfinder readout, are available for the first time in a camera of this type. Besides 28mm f/2.8, 40mm f/2, and 90mm f/4 M-Rokkor lenses that automatically change finder framing when attached, the Minolta CLE system also includes an exclusive dedicated flash unit. Smooth, quiet operation—along with many other useful and attractive features—

The Minolta CLE is the most sophisticated  
It's for people who really



makes the Minolta CLE the perfect camera for both professional and advanced-amateur photographers.

From the moment you pick up the Minolta CLE and examine its craftsmanship, black chrome finish and solid, professional "feel", you'll begin to appreciate—even more—this superb achievement in camera-design. The Minolta CLE: there's not another camera in the world like it!

ated rangefinder camera in the world.  
lly know photography!



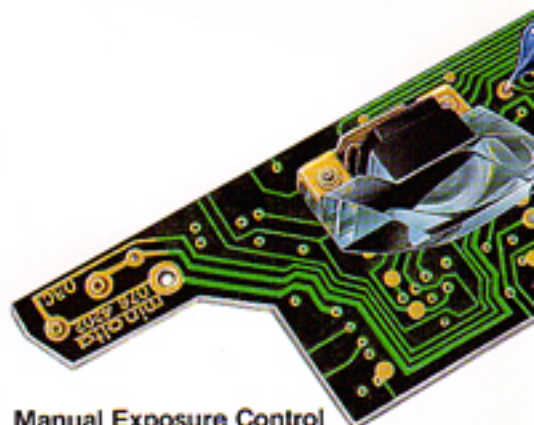
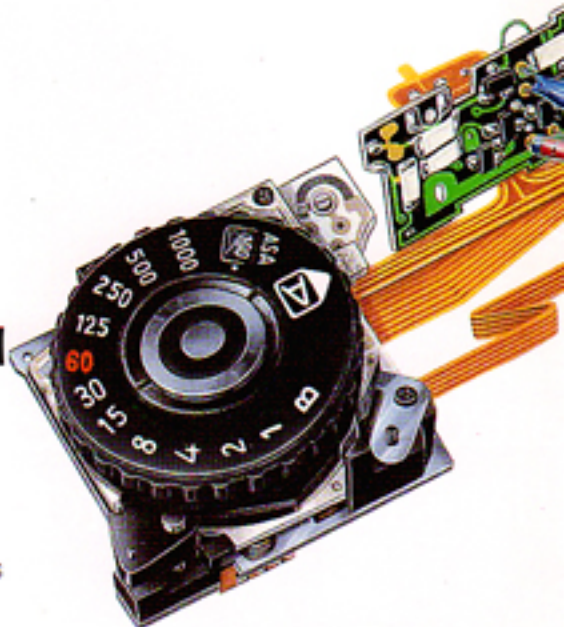
The Minolta CLE's specially-designed electronic brain is but one of many high technical achievements in this sophisticated rangefinder camera.

### **Creative Aperture Priority Automatic Exposure Control**

The Minolta CLE introduces advanced electronics to make this camera one of the best photographic systems available anywhere in the world. Creativity is greatly enhanced using the CLE's aperture priority automatic exposure controls: all you have to do is select the aperture you desire, and the camera's instantaneous electronic circuitry matches it to the precise stepless shutter speed for optimum exposure. Controlling the aperture ring allows you to choose your depth-of-field in addition to raising or lowering your compensating shutter speed, for a wide variety of creative effects.

### **Energy-saving "Touch Switch"**

The transient electricity pulsing across your finger is the key to the Minolta CLE's touch switch metering. The slightest finger contact on the camera's shutter release button activates the CLE's electronic circuitry and quick-response LED shutter speed readout; thus, there's no chance of inadvertently releasing the shutter while checking exposure settings, and no unnecessary use of battery power. When operating the CLE with gloves on, you merely depress the shutter button 0.4 mm to begin to activate metering.



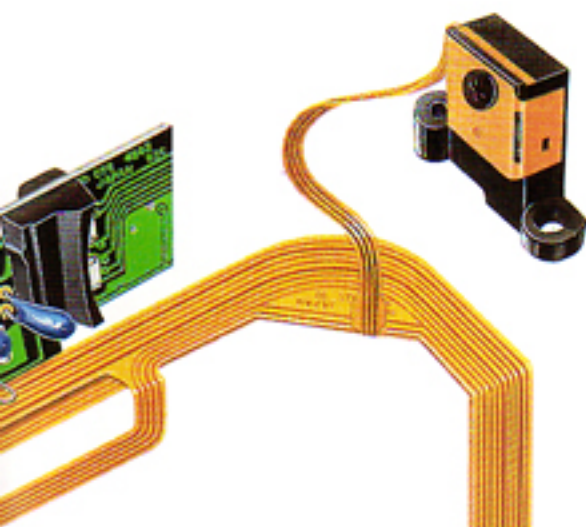
**Touch Switch** Minolta's energy-saving "Touch Switch" activates the CLE's electronic controls with the slightest finger contact. Depressing the shutter button 0.4 mm activates metering when using gloves.



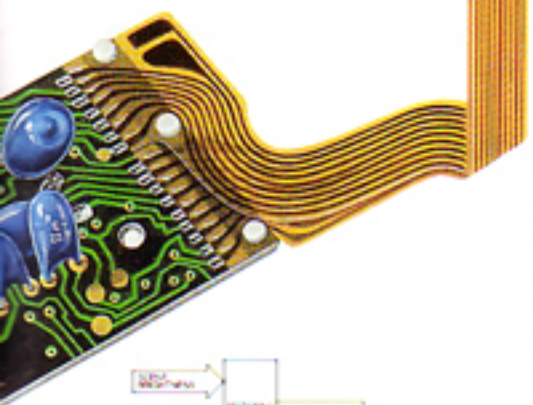
**Automatic Exposure Compensation** Override of the CLE's Automatic Exposure control by up to two full stops over or under that determined by metering is easily accomplished for both normal automatic and autoflash exposures.

### **Manual Exposure Control**

In addition to creative aperture priority automatic exposure control, the Minolta CLE also features a built-in, full manual exposure control with stepless shutter speeds from 1/1000 to 1 sec., which allows photographers to choose any aperture/shutter speed combination for the utmost in creative expression.



**Electronic Circuitry** The Minolta CLE uses sophisticated, solid-state electronic circuitry for maximum accuracy and dependability.



**Systems Graph** State-of-the-art electronics govern all of the Minolta CLE's functions with uncanny accuracy for always-perfect results in both normal automatic and auto flash exposure modes.

### Minolta's Patented Direct Metering

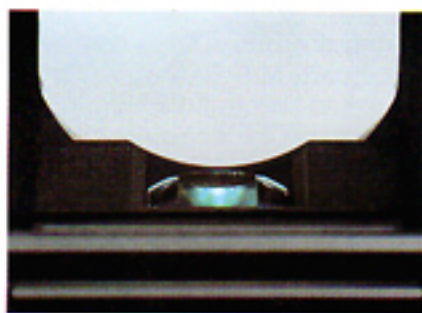
Minolta's patented Direct Metering System is activated when your finger touches the energy-saving "Touch Switch". A behind-the-lens super-sensitive silicon photo cell starts measuring subject brightness at the taking aperture from the reflective dot pattern on the shutter curtains, using a lens/mirror/prism module that focuses the light onto the photo cell. Even during the actual exposure, the Direct Metering System continues to monitor the light from the surface of the film itself. This provides both superior "real time" accuracy and extremely precise stepless shutter speeds over a wide range of lighting conditions.



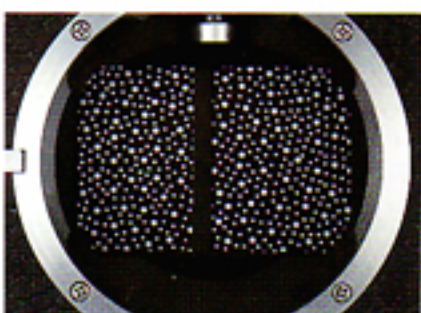
**Camera Cross-section** Light enters the Minolta CLE through the lens at the taking aperture, striking the shutter curtains or the film itself, and is reflected and concentrated onto an extremely sensitive silicon photo cell.

### Quiet Electromagnetic Shutter Release

The Minolta CLE's compact focal-plane shutter is extremely quiet in operation. This design also yields a smoother release and film advance. Additionally, the electromagnetic shutter release system makes remote operation easy and positive.

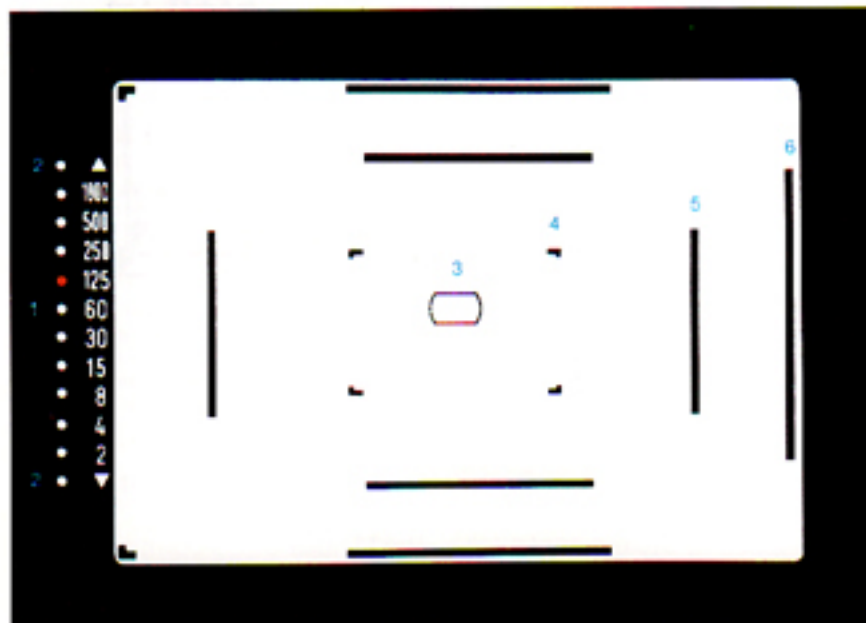


**L/M/P Module** The CLE's lens/mirror/prism module is a unique, specially-designed Minolta innovation. Located in the exposure chamber, it concentrates reflected light onto the photo cell for precise exposure measurement.



**Shutter Curtains** The Minolta CLE's randomly-patterned shutter curtains give precise shutter speed readings. Both curtains are surfaced to keep finder information from blacking out.

The Minolta CLE's bright,  
easy-focusing rangefinder system.  
And three compact,  
interchangeable M-Rokkor quality lenses.



1. LED shutter-speed indicators
2. LED over-/under-range indicators
3. Superimposed-/split-image focusing spot
4. Viewfield bright guides for 90mm lens\*
5. Viewfield bright guides for 40mm lens\*
6. Viewfield bright guides for 28mm lens (\*appear automatically when the appropriate lens is attached.)



**Coupler/roller** The Minolta CLE's lens coupler/roller gives automatic parallax correction and more precise focusing.

The Minolta CLE's rangefinder system features an effective base length of 28.9mm, a significant technical achievement for such a compact camera. Its bright, sharply-outlined rangefinder spot offers the user two ways of focusing: super-imposed imaging or the split-image method.

In the CLE's viewfinder you'll also see bright-line frames that change with each lens used. These give you the composition area for the wide-angle, normal or telephoto lens in use. Coupled with the CLE's extraordinary focusing system, these bright-line guides

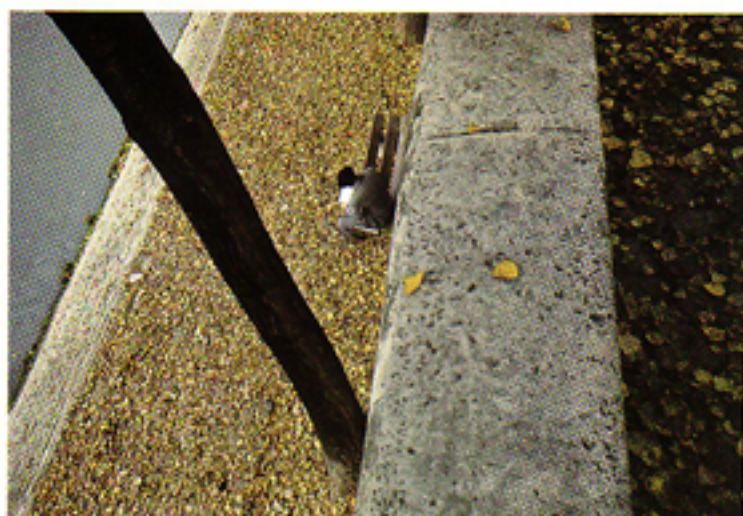
assure you that each picture will come out accurately, with no parallax errors.

Connecting one of three compact, high-quality M-Rokkor lenses is quick and simple: a 30° turn onto the Minolta CLE's bayonet mount locks it into place. Viewfinder framing is automatically changed with lens attachment, and automatic parallax correction shifts are made by means of the CLE's coupler/roller as each lens is focused.

The Minolta heritage of highest-quality optics is carried through with the Minolta CLE's three inter-

changeable M-Rokkor lenses that span the focal length range from wideangle to telephoto. These three superb lenses are crafted with extreme care and manufactured to exacting tolerances to give remarkable clarity and precise operation, while being compact and lightweight.

Minolta's exclusive Achromatic coating on each M-Rokkor lens improves light transmission and color rendition, in addition to minimizing internal reflections that may cause flare. Each lens has its own hood and accepts 40.5mm-diameter filters and accessories.



## 28mm F2.8



A brand new lens design from Minolta. A seven-element, five-group construction weighing a scant 135 g (4 3/4 oz.) and measuring  $\phi 51 \times 35.5$  mm ( $\phi 2 \times 1 13/32$  in.). Perfect for working in close quarters, for group shots, scenics, etc.

## 40mm F2

Six-elements in four groups, weighing 105 g (3 13/16 oz.) and measuring  $\phi 51 \times 24.5$  mm ( $\phi 2 \times 3/32$  in.). This is the standard or "normal" lens for the Minolta CLE, and its great versatility is demonstrated by its wide range of use in almost all situations.



## 90mm F4

$\phi 51 \times 60$  mm ( $\phi 2 \times 2 3/8$  in.), 250 g (8 13/16 oz.) and with a superb four-element construction. This all-purpose telephoto lens, like the standard and wide-angle lenses above, features Minolta's exclusive Achromatic coating for optimum color rendition, along with half-stop clicks on the diaphragm setting ring for interim aperture settings.



# The most compact dedicated flash for TTL auto flash photography.

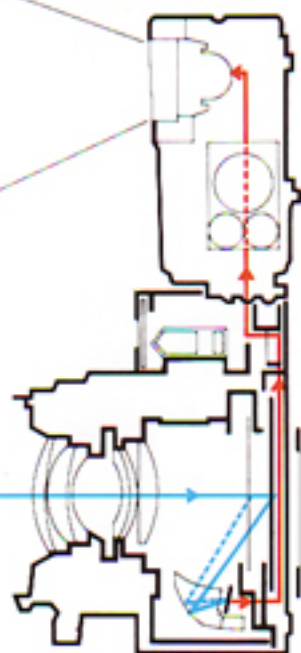
The Minolta CLE's dedicated auto flash is the most compact of its kind and helps in difficult lighting situations. When the flash unit's capacitor is fully charged at automatic speeds below 1/60 sec., the viewfinder's shutter speed LED blinks next to the 1/60 indication. Depressing the CLE's shutter release button sets the camera to the correct X-sync., releases the shutter and triggers the flash.

Flash emission is monitored through the lens and flash duration for proper exposure is automatically controlled by CLE's Direct Metering System.



As flash photographs can be taken at any aperture, depth-of-field control is greatly simplified, and use of a wide-angle or telephoto lens will not affect the metering accuracy in any way. Full power manual settings yield a guide number of 14 in meters at ASA 100 (23 for feet at ASA 25).

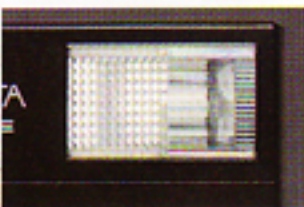
Special circuitry in the CLE's Auto Electroflash reduces power to the capacitor immediately after full charge is attained, reducing battery drain and extending battery life approximately three times longer than that of a similar electronic flash without this circuitry. In addition, a new 3-pin type hot shoe for input/output of exposure control data and information connects up the electronic circuitry of both the camera and flash.



**Hot Shoe** The CLE's hot shoe features a new 3-pin type contact for input/output exposure control data, connecting the camera's and flash unit's electronic circuitry.



**ASA Setting** Setting the film's ASA speed on the back of the CLE's Auto Electroflash gives you accurate subject-to-lens distance range references for flash coverage information at a glance.



**Diffuser Panel** The CLE's Auto Electroflash has a built-in diffuser panel to allow use of the M-Rokkor 28mm f/2.8 wide-angle lens for excellent, even coverage.

**Auto Electroflash Operation** Flash emission is accurately metered through the lens and off the film by the CLE's Direct Metering System, and the exact flash duration is precisely governed.





# Names of Parts



1. Frame-counter window
2. Auto-setting release button
3. Shutter-speed/function selector
4. Touch switch/shutter-release button
5. Film-speed window
6. Film-advance lever
7. Framing-guide illumination window
8. Hot shoe
9. Viewfinder window
10. Remote-release socket
11. Strap lug
12. Lens-release button
13. Rangefinder window
14. Main power switch
15. Self-timer/battery-check indicator
16. Finder eyepiece
17. ASA/DIN conversion table
18. Memo holder
19. Back-cover release knob
20. Rewind crank
21. Battery-check button
22. Battery-chamber cover
23. Film-rewind release button
24. Tripod socket
25. Diffuser panel and lug
26. Bracket contact switch
27. Attaching bracket
28. Flash tube and reflector with guard window
29. Diffuser-panel aperture scale
30. Normal aperture scale
31. Film-speed scale window
32. Film-speed selector
33. Battery-chamber cover
34. Flash-distance indicators
35. Flash-control contact
36. Sync. contact
37. Camera-control contact
38. Monitor lamp and test button
39. LED flash-coverage indicators
40. Power switch



**Lever** The CLE's rapid wide-angle lever advances the film frame smoothly with a single 130° stroke.

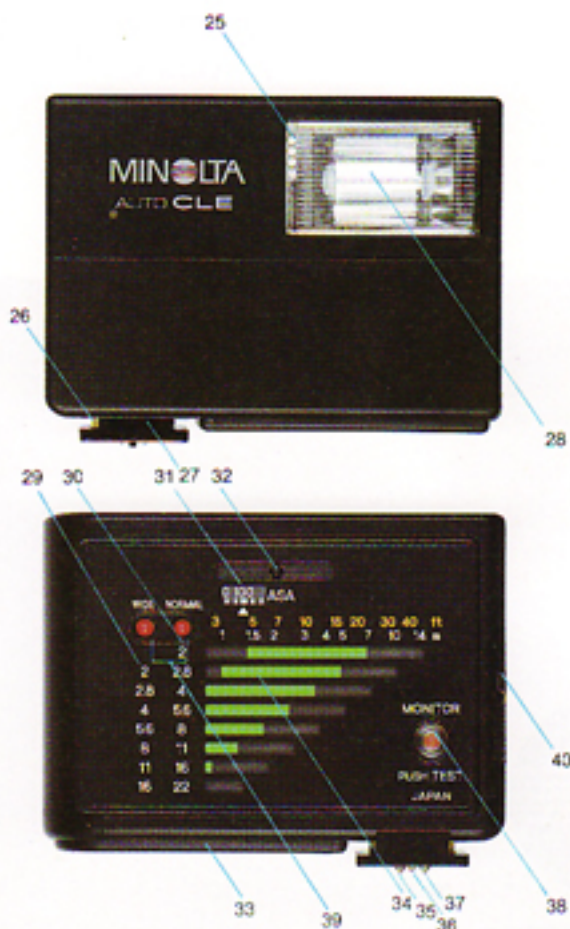


**Self Timer** An LED self-timer with a 2-step blinking rate gives an approximate 10-second delay.



**CLE Bayonet Mount** Lenses securely lock to the camera body by means of the CLE's bayonet mount and lock button.

# Specifications



## Creative system accessories

- 40mm f/2 M-Rokkor
- 28mm f/2.8 M-Rokkor
- 90mm f/4 M-Rokkor
- Auto Electroflash CLE
- Shoulder case CLE
- Remote cord S, 50cm (20 in.)
- Remote cord L, 5m (16 ft.)
- Minolta filters: L37 (UV), Y52, 1B, C56, R60, A12, B12, ND4X, (40.5mm diam.)
- Eyepiece corrector Vn No. 1-9

## CLE

Type:	Compact 35 mm system rangefinder camera with aperture priority automatic exposure control
Lens mount:	Leitz-Minolta CL bayonet, 30° rotating angle
Auto exposure range:	EV 3 to 18 at ASA 100 with 40mm f/2 lens
Metering:	Stop-down TTL off-the-film plane type by single silicon photo cell with lens-mirror-prism module Film speed range: ASA 25 to 1600 Auto exposure adjustment: Up to ±2 EV Electronically controlled horizontal-traverse focal-plane type with electromagnetic release
Shutter:	1/1000 to 1/2 sec. steplessly on automatic mode
Shutter speed:	1/1000 to 1 sec. in steps plus B (bulb) on manual mode
Focusing:	Superimposed-image and split-image rangefinder; Automatic parallax correction coupled to mechanism which follows cam on lens. Minimum focusing distance 0.8m with 40mm f/2
Viewfinder:	Bright-frame type with sliding mask to automatically adjust framing for 40mm and 90mm lenses; stepless speed indicated by 10LED LED over/under-range indicators, LED at "60" position also blinks as flash-ready signal with special CLE and Minolta X-series Auto Electroflash; field of view 85° at 3m with 40mm lens, magnification 0.58X, effective base length 28.9mm (actual base length 49.6mm)
Flash sync:	3-pin type hot shoe for X-sync; electroflash synchronizes below 1/60 sec. Class MF, M and F flashbulbs synchronizes below 1/15 sec. Special contact sending signal from Direct Metering System to Auto Electroflash CLE to control flash duration
Film advance:	By lever with 130° stroke after 30° unengaged movement
Self-timer:	Electronic, LED indicated type; approx. 10 sec. delay
Power:	Two 1.5v silver-oxide or alkaline-manganese cells Eveready EPX-76/S-76, A-76 or equivalent cells memo holder and ASA-DIN conversion table on back cover
Other:	J24.5x77.5x32mm (4 1/4 x 3 1/4 x 1 1/4 in.)
Size and weight:	375g (13 1/2 oz.) without power cells
Accessories:	M-Rokkor interchangeable lenses, exclusive Auto Electroflash CLE, Remote Cord S 50cm (20 in.), Remote Cord L 5m (16 ft.), Minolta L37 (UV), Y52, 1B (skylight), C56, R60, A12, B12, ND 4X, 40.5 diam. filters, Eyepiece Corrector Vn No. 1 through No. 9 (-4 through +3 diopt.), Mini Tripod TR-1, Shoulder Case CLE

## Auto Electroflash CLE

Type: Clip-on automatic/manual electric flash unit with special contacts for both camera control and TTL off-the-film autoflash control with Minolta CLE camera

Guide number:	NORMAL	WIDE
Meters, ASA 100:	14	10
Feet, ASA 25:	23	16

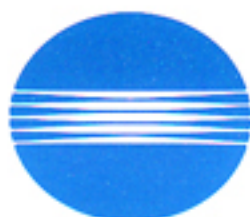
Auto working range at ASA 100:	Normal: 0.8-7m Wide: 0.8-5m
Selectable apertures:	From f/2 to f/16 at ASA 100
Autoflash control:	By Minolta Direct Metering in CLE camera
Flash duration:	Approx. 1/40,000 to 1/3,000 sec. in auto operation. Approx. 1/3,000 sec. in manual operation.
Color temperature:	Balanced for daylight-type color film
Angle of coverage:	For lenses down to 40mm, 28mm with built-in diffuser
Power sources:	Two 1.5v AAA-size AM, sealed C-Zn or Ni-Cd cells
Number of flashes/ recycle time*	AM cells 80/7 Sealed C-Zn cells 40/9 Ni-Cd cells 40/4

\*As determined by Minolta's standard testing method. Actual performance will depend on type, brand, manufacturer's lot, age of batteries, and ambient temperature

## M-Rokkor lenses

	28mm f/2.8	40mm f/2	90mm f/4
Lens:	7 elements	6 elements	4 elements
Construction:	in 5 groups	in 4 groups	in 4 groups
Angle of view:	75°	57°	27°
Min. focusing dist:	0.8m (2 ft. 7 1/2 in.)	0.8m (2 ft. 7 1/2 in.)	1m (3 ft. 3 1/2 in.)
Filter-thread:	40.5mm	40.5mm	40.5mm
Dimensions:	ø51x36.5mm (ø2x1 1/2 in.)	ø51x24.5mm (ø2x 3/4 in.)	ø51x60mm (ø2x2 3/8 in.)
Weight:	135g (4 1/2 oz.)	106g (3 1/4 oz.)	250g (8 1/2 oz.)

Specifications subject to change without notice



# MINOLTA

**Minolta Camera Co., Ltd.**

**Minolta Camera Handelsgesellschaft m.b.H.**

**Minolta France S.A.**

**Minolta (UK) Ltd.**

**Minolta Vertriebsgesellschaft m.b.H.**

**Minolta Nederland B.V.**

**Minolta (Schweiz) GmbH**

**Minolta Corporation**

**Head Office**

**Los Angeles Branch**

**Chicago Branch**

**Atlanta Branch**

**Minolta Canada Inc.**

**Head Office**

**Montreal Branch**

**Vancouver Branch**

**Minolta Hong Kong Limited**

**Minolta Singapore (Pte) Ltd.**

**30, 2-Chome, Azuchi-Machi, Higashi-Ku, Osaka 541, Japan**

**Kurt-Fischer-Strasse 50, D-2070 Ahrensburg, West Germany**

**357 bis, rue d'Estienne d'Orves, 92700 Colombes, France**

**1-3 Tanners Drive, Blakelands, Milton Keynes, Buckinghamshire MK14 5EW,  
England**

**Seidengasse 19, A-1072 Wien, Austria**

**Zonnebaan 39, Postbox 264, 3600 AG, Maarssenbroek-Maarssen,  
The Netherlands**

**Riedhof V, Riedstrasse 6, 8953 Dietikon-Zürich, Switzerland**

**101 Williams Drive, Ramsey, New Jersey 07446, U.S.A.**

**3105 Lomita Boulevard, Torrance, CA 90505 U.S.A.**

**3000 Tollview Drive, Rolling Meadows, IL 60008, U.S.A.**

**5904 Peachtree Corners East, Norcross, GA 30071, U.S.A.**

**1344 Fewster Drive, Mississauga, Ontario L4W 1A4, Canada**

**7575 Trans Canada Hwy., Montreal, Quebec H4T 1V6, Canada**

**1620 W. 6th Avenue, Vancouver, B.C. V6J 1R3, Canada**

**Oriental Centre Ground Floor, 67-71 Chatham Road South,**

**Kowloon, Hong Kong**

**5th Floor, Chiat Hong Bldg., 110, Middle Road, Singapore 0718**