

DYNAX™

5000i

POCKET GUIDE



MINOLTA



MAJOR FEATURES

Intelligent Autofocus

- *Extra-wide autofocus area*
- *Predictive Focus Control*
- *Low-light autofocus*

Intelligent Exposure

- *Autofocus-integrated dual metering system*
- *Automatic contrast compensation*
- *Advanced Automatic Multi-Program Selection*

Built-In Intelligent Zoom Flash

- *Zoom flash (35—70mm)*
- *Advanced automatic fill-flash*
- *Slow-shutter sync*

Creative Expansion Card System

- *A/S Mode Card*
- *Automatic Depth Control Card*
- *Sports Action Card*
- *Portrait Card*
- *Closeup Card*



DYNAX[™]
5000i

OPERATING THE DYNAX 5000i

Load



Easy film handling is just one example of the simple operation that typifies the Dynax 5000i. To load, first insert the film and extend its leader.



Next, close the back. Auto threading and advance bring the first frame into position, indicated by the LCD's frame counter.



After each picture is taken, the film is automatically advanced. At the end of the roll, rewind starts automatically. The LCD shows when rewind is complete.

Shoot



With fully automatic operation set (AF and AE), taking high quality pictures could hardly be easier: just aim the camera and press the shutter-release button.



At the touch of a button, the built-in flash is brought into operation. All subsequent flash control is completely automatic.



Standard camera operation can be easily customized with Minolta's unique Creative Expansion Card system.

INTELLIGENT AUTOFOCUS

Extra-wide autofocus area



With Dynaflex 5000's extra-wide autofocus area



With a conventional autofocus area

The Dynaflex 5000's Intelligent Autofocus System has an extra-wide autofocus area, up to four times larger than that of conventional autofocus SLRs. This makes it much easier to photograph fast action, since centering a moving subject can be tricky.





With Dynax 5000's extra-wide autofocus area



With a conventional autofocus area

Even with still subjects, the Dynax 5000's wide focus area makes operation much easier. The requirement for precise centering is reduced, so autofocusing is easier and focus hold doesn't need to be used as often.



INTELLIGENT AUTOFOCUS

Predictive Focus Control



With Dynax 5000i's
Predictive Focus Control

With a conventional
autofocus system

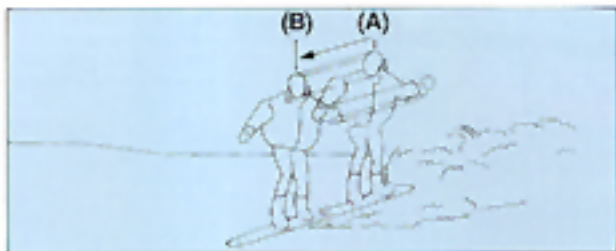


With fast-moving subjects, even the very brief interval elapsing during the shutter-release sequence is enough for a significant change in subject position to occur. Predictive Focus Control adds a new level of precision to standard autofocus operation by continuing to drive the lens during the shutter-release sequence, whenever a fast-moving subject is detected.



Low-light autofocus

Passive-type autofocus systems, the kind found in most AF SLRs, depend on detection of subject contrast for operation; without sufficient contrast, these systems tend to stall. The Dynax 5000i's autofocus system, employing a high-sensitivity AF-CCD sensor and an automatically-activated AF illuminator, offers superior performance in low light, low contrast situations.



The difference is in the time lag: with conventional autofocus systems, focus is frozen when the mirror starts to swing up (A), but Minox's Predictive Focus Control actually calculates where the subject will be at the instant of exposure (B), based on subject movement prior to mirror swing-up, and then sets focus to this position while the mirror is moving.



Built-in AF Illuminator



INTELLIGENT EXPOSURE

Autofocus-integrated dual metering system



The Dynax 5000i's Intelligent Exposure System always gives you the right exposure for true-to-life images.

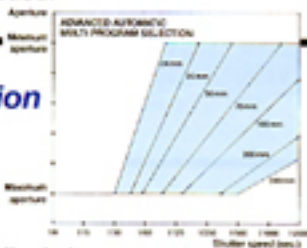


Standard exposure modes in the Dynax 5000i are program autoexposure and manual. In program mode all exposure settings are made automatically by the camera, freeing the user to concentrate on the picture elements. The metering cell's central segment overlaps the focus frame, ensuring accurate metering for the autofocused subject.

When the shutter-release button is pressed partway down, autoexposure and autofocus readings are locked in. For cases where the main subject is framed off center, this AF/AE lock feature frees the user to recompose the frame as needed.

Advanced Automatic Multi-Program Selection

The aperture and shutter-speed values set in program autoexposure mode are based on Automatic Multi-program Selection (AMPS), Minolta's system for optimizing exposure according to the focal length in use.



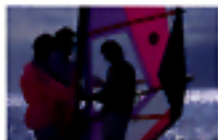
Wide ←

→ Tele

Automatic contrast compensation



With Dynax 5000's automatic contrast compensation



Without automatic contrast compensation

While the central segment of the metering cell measures light reflected from the main subject, the surrounding segment reads the background. Whenever the metering system measures a large difference in the amount of light falling on the two cell segments (as might occur in the case of backlit subject), it automatically provides exposure compensation.



AE Lock

In normal autoexposure operation, the metering system is controlled by the shutter-release button, and it bases its reading on the autofocused subject. For special exposure situations, where the main subject is very light or dark in tone (e.g., a snow landscape), improved results are obtained if the metering is based on a separate, mid-tone subject. For this purpose, automatic exposure lock (AEL), which memorizes an independent exposure reading, can be used.

BUILT-IN INTELLIGENT ZOOM FLASH



Advanced automatic fill-flash



With Dynax 5000i's advanced automatic fill-flash



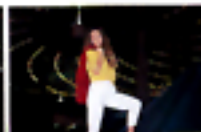
Without fill-flash

When the flash is active in Program Mode, it fires whenever the camera detects that flash is required for correct exposure, including backlit scenes. Day light scenes with strong backlighting, that might otherwise result in the main subject being underexposed, are captured in beautifully balanced flash exposures with the Dynax 5000i.

Zoom flash



35 mm

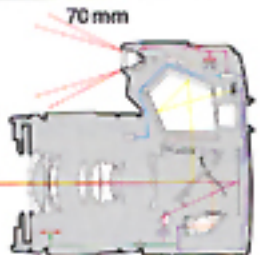


50 mm



70 mm

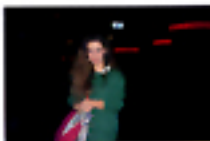
The Dynax 5000i's built-in flash with zoom head automatically adjusts coverage continuously, between 35mm and 70mm, according to the lens in use.



Slow-shutter sync



With Dynax 5000i's built-in flash using slow-shutter sync.



With conventional flash coverage using X-sync speed.

Slow-shutter sync, operated by pressing the AEL button, can be used to increase the background exposure in flash pictures. It works by setting a slower shutter speed than would be used otherwise, and reducing flash output to maintain correct exposure on the main subject.

* With slow-shutter sync, use of a tripod is recommended.



CREATIVE EXPANSION CARD SYSTEM

The Dynax 5000i's standard features can be extended or customized using Minolta's Creative Expansion Card System. The expansion cards slip into the camera's card door, and can be controlled with the card on/off key, located adjacent to the data panel. Five expansion cards can be used, including the new A/S mode card, which is dedicated for use with the Dynax 5000i and four Special Application cards.



Sports Action Card

The Sports Action Card uses a high speed exposure program that maintains a fast shutter speed to freeze sports and other fast action.



Portrait Card

The Portrait Card controls the exposure setting to separate the subject from its surroundings.



A/S Mode Card

The A/S mode card enables the user to supplement the camera's standard exposure mode selection, program and manual, with two additional exposure options: aperture-priority and shutter-priority autoexposure.



Automatic Depth Control Card

The Automatic Depth Control Card maximizes the depth of field for sharp focus, so that both foreground and background subjects will be in sharp focus.



Closeup Card

The Closeup Card controls the aperture setting to provide optimum depth of field for closeup and macro subjects. The shutter speed is adjusted to provide correct exposure at the selected aperture.

DYNAX i-SERIES SPECIFICATIONS

	DYNAX 3000i
Dynax Autofocus System	Focus-priority
Autofocus Sensitivity at ISO100	EV0 to EV18
Metering	AF coupled TTL dual-area metering
Exposure Modes	P, Hi-speed P
Automatic Multi-Program Selection	yes
Shutter-speed Range	$\frac{1}{1000}$ —4 sec.
Autoexposure Range*	EV1 to EV20
AF illuminator	no
Film-Speed Range	ISO 32 to 3200
Auto Setting for DX Film	yes
Auto Advance to First Frame	yes
Auto Film Advance and Rewind	yes
Maximum X-sync. Speed	$\frac{1}{60}$ sec.
Slow-Shutter Sync.	no
Standard Power Source	6 volt 2CR5 lithium battery
Battery Performance (using 24-exposure roll)	55 rolls without flash
Dimensions	60.5 x 88.5 x 142 mm
Weight (without batteries)	420 g
All Minolta AF Lenses	yes (except AF Reflex 500mm)
Creative Expansion Card	no
Program Backs	no
Data Backs	DB-3
Remote Cord RC-1000L/RC-1000S	no

* Based on Minolta's standard test method, using with ISO 100 film and 50/1.4 lens

DYNAX 5000i	DYNAX 7000i
shutter release with Predictive Focus Control	
EV0 to EV18	EV0 to EV18
AF coupled TTL dual-area metering	AF integrated TTL multi-pattern metering
P, M (A, S with A/S Mode Card)	P, M, A, S
yes	yes (plus program shift)
$\frac{1}{2000}$ —4 sec., bulb	$\frac{1}{4000}$ —30 sec., bulb
EV1 to EV20	EV0 to EV20
yes	yes
ISO 25 to 5000	ISO 25 to 6400
yes	yes
yes	yes
yes	yes
$\frac{1}{50}$ sec.	$\frac{1}{125}$ sec.
yes	yes
6 volt 2CR5 lithium battery	6 volt 2CR5 lithium battery
65 rolls without flash	65 rolls
65 × 97.5 × 148.5 mm	69 × 93 × 153 mm
495 g	590 g
yes	yes
yes	yes
no	PB-7
DB-5	DB-7
yes	yes

MINOLTA AUTOFOCUS LENS SPECIFICATIONS

Lens	Elements/ Groups	Angle of View
AF 16/2.8 Fisheye	11/8	180°
AF 20/2.8	10/9	94°
AF 24/2.8	8/8	84°
AF 28/2	9/9	75°
AF 28/2.8	5/5	75°
AF 35/1.4	10/8	63°
AF 35/2	7/6	63°
AF 50/1.4	7/6	47°
AF 50/1.7	6/5	47°
AF 85/1.4	7/6	28°30'
AF 100/2	7/6	24°
AF 135/2.8	7/5	18°
AF 200/2.8 Apo	8/7	12°30'
AF 300/2.8 Apo	11/9	8°10'
AF 600/4 Apo	10/9	4°10'
AF Reflex 500/8*	7/5	5°
AF 24-50/4	7/7	84°—47°
AF 28-85/3.5-4.5	13/10	75°—29°
AF 28-135/4-4.5	16/13	75°—18°
AF 35-80/4-5.6	8/8	63°—30°
AF 35-105/3.5-4.5	12/10	63°—23°
AF 70-210/3.5-4.5	12/12	34°—12°
AF 75-300/4.5-5.6	13/11	32°—8°10'
AF 80-200/2.8 Apo	16/13	30°—12°30'
AF 80-200/4.5-5.6	9/9	30°—12°30'
AF 100-200/4.5	8/7	24°—12°30'
AF 100-300/4.5-5.6	11/9	24°—8°10'
AF 50/2.8 Macro	7/6	47°
AF 100/2.8 Macro	8/8	24°
AF 1.4X Tele Converter Apo	5/4	—
AF 2X Tele Converter Apo	6/5	—

*Used with Dynax 7000i or Dynax 5000i, can be operated in either autofocus (3000i, 5000i, 7000i, 9000i) manual focus only, by reference to the viewfinder

ONS

Minimum Focus	Minimum Aperture	Filter (dia.)	Dimensions (dia. × length)	Weight
0.2m	f/22	integral	75 × 66.5mm	400g
0.25m	f/22	72mm	77.5 × 53.5mm	285g
0.25m	f/22	55mm	65.5 × 44mm	215g
0.3m	f/22	55mm	66.5 × 49.5mm	285g
0.3m	f/22	49mm	65.5 × 42.5mm	185g
0.3m	f/22	55mm	65.5 × 78mm	470g
0.3m	f/22	55mm	66.5 × 48.5mm	240g
0.45m	f/22	49mm	65.5 × 38.5mm	235g
0.45m	f/22	49mm	65.5 × 38.5mm	185g
0.85m	f/22	72mm	78 × 71.5mm	550g
1.0m	f/32	55mm	67 × 75.5mm	480g
1.0m	f/32	55mm	65.5 × 83mm	365g
1.5m	f/32	72mm	88 × 134mm	790g
2.5m	f/32	integral	128 × 238.5mm	2480g
6.0m	f/32	integral	169 × 449mm	5500g
4.0m	—	integral	89 × 118mm	665g
0.35m	f/22	55mm	69 × 60mm	285g
0.8m	f/22-27	55mm	68.5 × 85.5mm	490g
1.5m	f/22-27	72mm	75 × 109mm	750g
0.5m	f/22-32	46mm	65 × 58mm	220g
0.85m	f/22-27	55mm	68.5 × 59.5mm	290g
1.1m	f/22-27	55mm	72.5 × 100mm	420g
1.5m	f/32-38	55mm	72.5 × 63.5mm	985g
1.8m	f/32	72mm	87.5 × 166.5mm	1350g
1.5m	f/22-27	46mm	67 × 78mm	300g
1.9m	f/22	49mm	69.5 × 94.5mm	375g
1.5m	f/32-38	55mm	72.5 × 100mm	410g
0.2m	f/32	55mm	68.5 × 59.5mm	310g
0.35m	f/32	55mm	71 × 98.5mm	520g
—	—	—	64 × 20mm	175g
—	—	—	64.5 × 43.5mm	210g

or manual focus mode; with other Minolta AF-SLR cameras (Dynax screen, is possible.

DEMONSTRATING DYNAX 5000i

Many customers to whom you show the Dynax 5000i will already be familiar with 35mm compact cameras. Mention that the Dynax 5000i is just as easy to use, but also provides the versatility that only a single-lens-reflex camera can.

Below are some suggestions you may find useful in demonstrating the Dynax 5000i to potential customers.

- Set the main switch to ON and focus the camera so that the customer can observe autofocus operation. Then let the customer handle the camera. Explain that autofocus is operated by centering the focus frame on a subject and pressing the shutter-release button partway down.



QUESTIONS AND ANSWERS

Q: What benefits does Minolta's Dynax autofocus system offer the user?

A: Speed and accuracy. High-speed data processing, a wide focusing area, and Predictive Focus Control are combined to create the world's most advanced autofocus design. It sets focus faster and with greater precision than even the most seasoned professional photographer. High-sensitivity AF sensors and an AF illuminator enable the AF system to function even in very low light.

Q: What is the Creative Expansion Card System?

A: An unprecedented accessory system that allows users to customize camera operation to suit individual interests and purposes. Cards available for the Dynax 5000i include four Special Application Cards that specifically modify camera operation for applications such as portraiture, sports photography, and closeup photography. The A/S Mode Card can be used to add aperture—and shutter—priority autoexposure mode 16 to the Dynax 5000i's standard exposure mode selection.

- Demonstrate the camera's easy operation by loading a roll of film. Point out that the film is automatically advanced to the first frame, and the camera is then set for taking pictures. Mention that of AF SLRs with built-in flash, the Dynax 5000i is the most compact and lightweight available.
- Show how the Dynax 5000i's built-in flash is easily turned on, and explain that the flash fires automatically whenever needed—even to provide fill flash for backlit subjects.



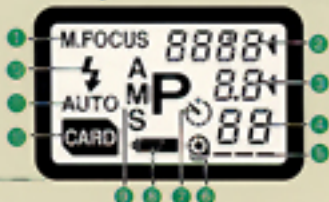
Q: Won't the camera require frequent battery changes because of its many automated systems?

A: Not really. The camera's circuitry is designed to conserve power. With a fresh battery installed, you should be able to shoot 25 rolls of film, using flash on 50% of the exposures.

Q: How does the camera's AF illuminator work?

A: Most SLR autofocus systems, including the Dynax 5000i's, depend on subject contrast for autofocus operation. In low light, low contrast situations, the AF illuminator automatically projects a red-light contrast pattern onto the subject in order to provide sufficient contrast for autofocus operation. AF SLRs without built-in AF illuminators are at a serious disadvantage, compared to the Dynax 5000i, in these situations.

Data panel



- 1 Manual-focus-mode indicator
- 2 Shutter-speed value/card name
- 3 Aperture value
- 4 Frame counter
- 5 Film-transport signals
- 6 Film-cartridge symbol
- 7 Self-timer indicator
- 8 Battery-condition indicator
- 9 Exposure-mode indicator
- 10 Card-in-use indicator
- 11 Auto-flash indicator
- 12 Flash-on indicator

Viewfinder



- 1 Focus frame
- 2 Focus signals
- 3 Exposure signals
- 4 Flash-ready signal



- 1 Focus-mode switch
- 2 Lens release
- 3 Aperture-setting button
- 4 Flash ON/OFF key
- 5 Built-in flash
- 6 Accessory shoe
- 7 Card ON/OFF key
- 8 Data panel
- 9 Main switch
- 10 Strap eyelet
- 11 Control keys
- 12 Card door
- 13 Remote-control terminal
- 14 Shutter-release button
- 15 AF Illuminator/Self-timer light



- 1 Card-eject slide
- 2 Exposure-mode button
- 3 Self-timer button