



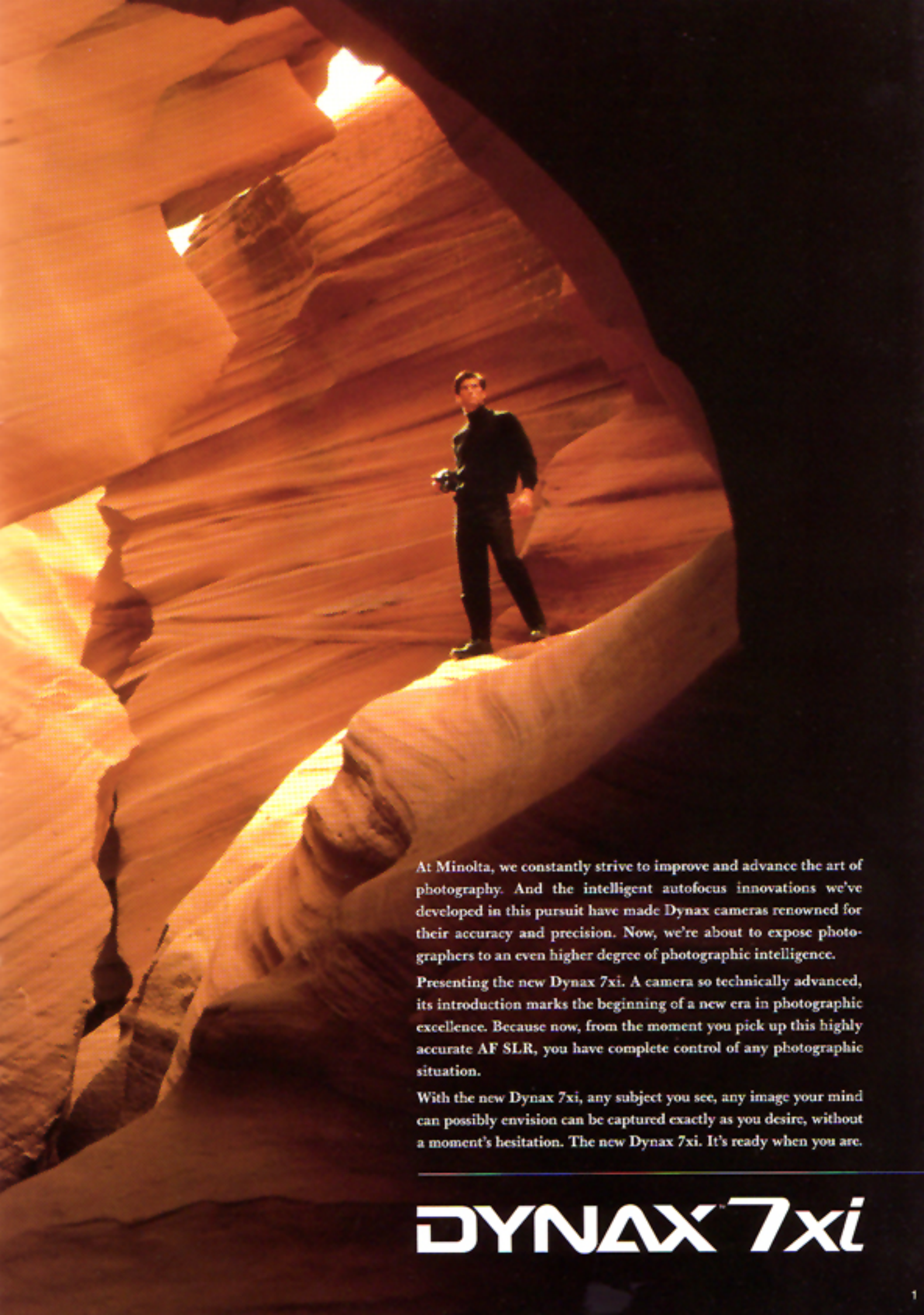
DYNAX™ 7xi

The world's most advanced AF SLR
with expert intelligence.



Introducing the world's most advanced AF SLR
with expert intelligence.





At Minolta, we constantly strive to improve and advance the art of photography. And the intelligent autofocus innovations we've developed in this pursuit have made Dynax cameras renowned for their accuracy and precision. Now, we're about to expose photographers to an even higher degree of photographic intelligence.

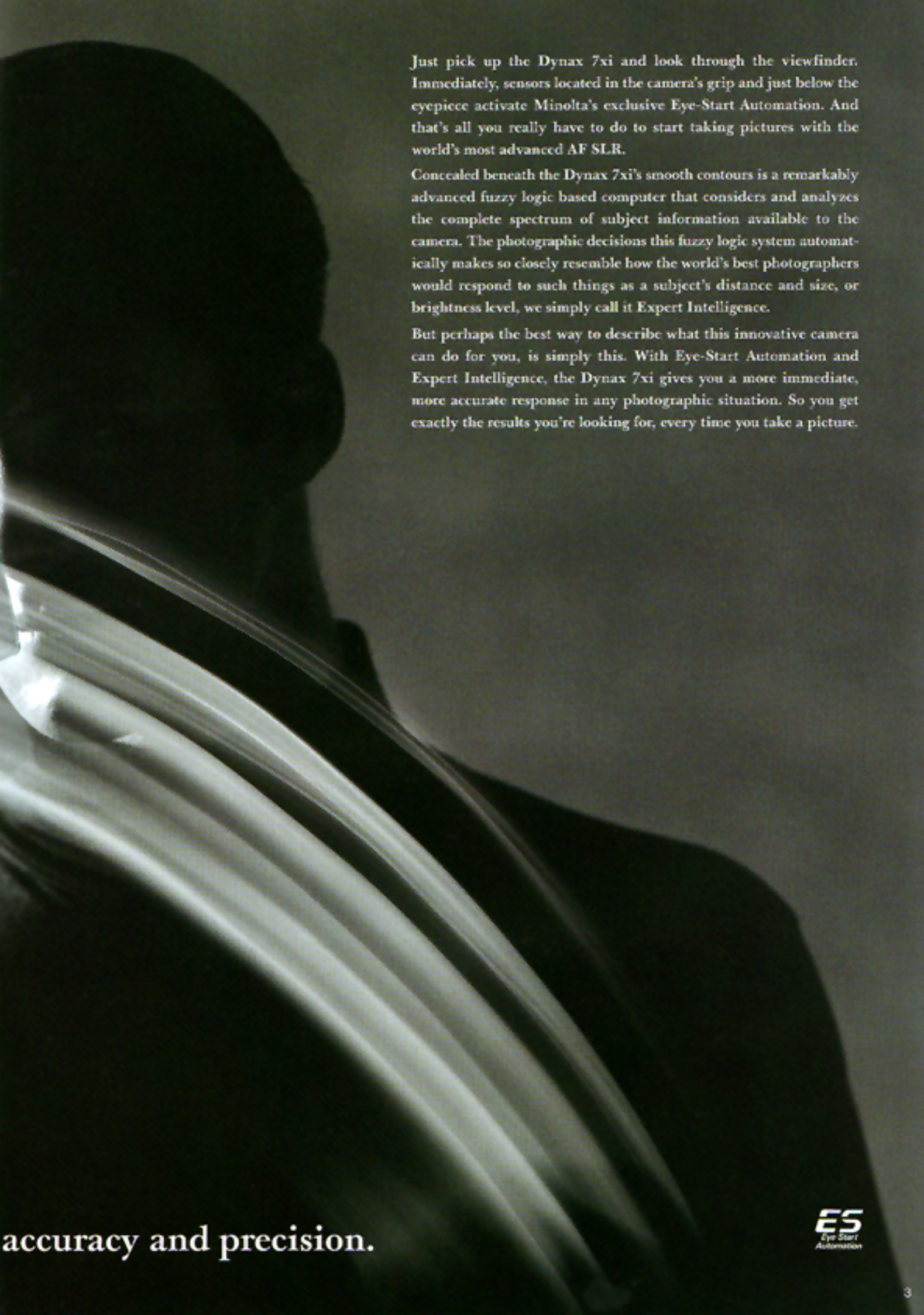
Presenting the new Dynax 7xi. A camera so technically advanced, its introduction marks the beginning of a new era in photographic excellence. Because now, from the moment you pick up this highly accurate AF SLR, you have complete control of any photographic situation.

With the new Dynax 7xi, any subject you see, any image your mind can possibly envision can be captured exactly as you desire, without a moment's hesitation. The new Dynax 7xi. It's ready when you are.

DYNAX 7xi



Open your eyes to a new world of photographic



Just pick up the Dynax 7xi and look through the viewfinder. Immediately, sensors located in the camera's grip and just below the eyepiece activate Minolta's exclusive Eye-Start Automation. And that's all you really have to do to start taking pictures with the world's most advanced AF SLR.

Concealed beneath the Dynax 7xi's smooth contours is a remarkably advanced fuzzy logic based computer that considers and analyzes the complete spectrum of subject information available to the camera. The photographic decisions this fuzzy logic system automatically makes so closely resemble how the world's best photographers would respond to such things as a subject's distance and size, or brightness level, we simply call it Expert Intelligence.

But perhaps the best way to describe what this innovative camera can do for you, is simply this. With Eye-Start Automation and Expert Intelligence, the Dynax 7xi gives you a more immediate, more accurate response in any photographic situation. So you get exactly the results you're looking for, every time you take a picture.

accuracy and precision.

ES
Eye Start
Automation



With the Dynax 7xi in your hands, you are immediately prepared to capture any subject on film, any way you could possibly imagine. Because in the time it takes your eyes to focus on a subject, the Dynax 7xi has already performed all the time-consuming actions which may have caused you to miss the perfect moment in the past.

With Minolta's exclusive Eye-Start Automation, the Dynax 7xi's Expert AF, Expert AE and Expert Auto-zoom systems activate the instant you raise the camera to

eye-level. The moment you decide how you want your subject pictured, the Dynax 7xi automatically responds with the exact camera settings needed to make it possible. So you can capture incredibly fast action, beautiful once-in-a-lifetime images, or the most fleeting expressions, with astonishing speed and accuracy.

In fact, with the Dynax 7xi all you have to do is concentrate on your subject. And experience the joy of taking pictures that, until now, have been beyond your reach.

The Dynax 7xi responds so quickly and accurately,



it will forever change the way you take pictures.



You don't need years of experience as a photographer to use the Dynax 7xi. So you don't have to hone your photographic skills experimenting with trial and error, or expose countless rolls of film to get exactly the picture you want. Because, with Expert Intelligence, the Dynax 7xi makes getting precisely the picture you want entirely automatic.

With the Dynax 7xi, you can precisely photograph the finest details on every feather of a bird in flight. Turn

ordinary drops of water into sparkling jewels by freezing them in mid-air. Or effortlessly capture every special moment of your life for all time on film.

So prepare to develop your skills to the highest level, to explore the absolute limits of your imagination and make the very most of your talents. Because with more speed and greater precision than any camera ever, the Dynax 7xi is designed to let you fully mature as a photographer.

No camera has ever made it so easy to



realize your full potential as a photographer.

Expert AF System

Introducing the first AF system designed to automatically maintain focus as long as you look through the viewfinder.



From the very first moment you see the Dynax 7xi in action, it becomes clear just how easily this camera will raise your photographic skills. In the time it takes your eyes to focus on a subject, its Expert AF System has already done exactly the same thing. If several subjects appear in the picture frame, this system uses fuzzy logic to identify and focus on just the one you're looking at. Even if your subject is moving. Even in extremely low light. Then, the instant you see the picture you want, you can capture your subject in perfect focus. As many as four times a second. With up to an ultrafast 1/8000th of a second shutter speed.



Using four highly accurate, highly sensitive CCD sensors, the Dynax 7xi Expert AF System captures subjects with blinding speed and precision.

Ultra-Wide Focus Area With Multiple Sensors

The Dynax 7xi Expert AF System features the world's widest focus area, comprised of two horizontal and two vertical CCD sensors that activate the instant you look through the viewfinder. In the time it takes your eyes to focus, one of the four sensors has already located your main subject and the Dynax 7xi has determined the focus setting. At the same time, if your subject is moving, these sensors automatically activate Multi-Dimensional Predictive Focus Control.

This ultra-wide focus area also makes it easier than ever to track and freeze fast action on film, and means you have more framing choices to select the composition you desire for any scene. And for the first time ever in an SLR, AF brackets in the focus area are positioned to help you follow photography's "Rule of Thirds." This suggests placing your main subject near the intersections of the lines which divide the focus area into thirds horizontally and vertically to make the composition of your picture more interesting.



With the world's widest focus area, you can effortlessly track even the fastest moving subjects.

When you hold the Dynax 7xi in a vertical position, the top horizontal CCD sensor shuts off, and the AF brackets adjust to reflect possible changes in composition that are more appropriate for taller subjects.



Even in extremely low light levels, the Dynax 7xi's Expert AF System makes it possible to turn the most ordinary subjects into extraordinarily beautiful photographs.



Automatic Focus-Mode Selection

The instant you locate your subject in the ultra-wide focus area, Automatic Focus-Mode Selection begins to determine precisely where it will be when you press the shutter-release button. For still-life photography or portraits, focus is automatically locked. If subject movement is detected, the Dynax 7xi switches to High-Speed Continuous AF Mode. Using Expert Intelligence, the focus setting adjusts smoothly and continuously until the shutter actually makes the exposure, so even subjects shot in continuous drive mode remain in focus.

And for more precision and versatility, Local-Area Selection allows you to manually select any one of the four CCD sensors to sharply focus what you consider to be the most compelling feature of your subject.

High-Sensitivity Low-Light AF

The same Expert Intelligence that allows the Dynax 7xi to immediately determine subject distance and speed, also enables it to operate in much lower light levels and focus more clearly on low-contrast subjects. In the presence of low-illumination and low subject-contrast, the Expert AF System's CCD sensors are able to detect extremely subtle changes in subject brightness between adjacent pixels throughout the ultra-wide focus area.

In extremely low light levels, or whenever subject contrast is too low to be read by the CCD sensors alone, the Dynax 7xi's built-in AF illuminator automatically projects a pattern of red LED lines onto subjects up to nine meters away. The CCD sensors can then detect and focus on this pattern, so pin-point accuracy can be maintained, even in total darkness.

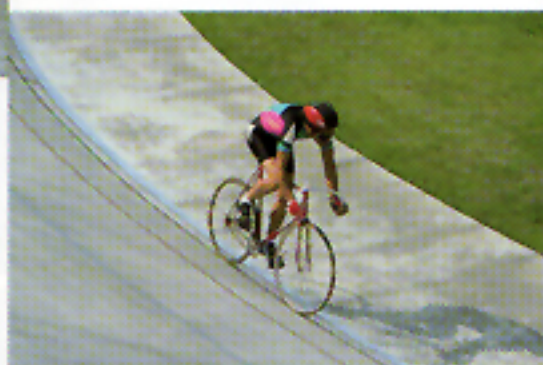
4 Frames-Per-Second AF Sequence Shooting With the world's fastest AF SLR in your hands you can capture practically every individual movement a moving subject makes. In High-Speed Continuous Mode the Dynax 7xi lets you freeze fast moving subjects four times every second. Low-Speed Continuous Mode provides two frames-per-second sequence shooting. The focus setting smoothly and continuously adjusts to maintain image accuracy between each exposure, as long as you hold the shutter-release button all the way down.

Multi-Dimensional Predictive Focus Control Unlike other AF SLRs, which can only maintain focus on a subject moving toward the camera at one speed, Minolta's exclusive Multi-Dimensional Predictive Focus Control can immediately react to a much wider range of subject movement. It can keep a subject that's rapidly accelerating, or one that's coming to a sudden stop sharply focused. Whether it's moving toward or away from the camera, or even across the viewfinder frame. And, with Multi-Dimensional Predictive Focus Control, you can even follow more erratic movements, such as sports action or animals in the wild.





If your subject is moving at any speed, in any direction, the Dynax 7xi's Multi-Dimensional Predictive Focus Control automatically activates to maintain razor-sharp focus, to the moment of exposure.



High-Speed AF From start to finish, there's never been a faster camera than the Dynax 7xi. All Expert AF System functions instantly activate with Eye-Start Automation to maintain optimum accuracy in all situations, even if your subject is moving erratically or at extremely high speeds. Then, when you see precisely the image you want, you can capture the moment at shutter speeds up to an ultrafast 1/8000th of a second.

1/8000 Sec. High-Speed Shutter With shutter speeds up to an ultrafast 1/8000th of a second, you can freeze any moment, at the peak of action, in perfect focus with the Dynax 7xi. This high-speed electronic shutter also provides a maximum flash sync of 1/200th of a second.



Expert AE System

For the first time ever, an intelligent exposure system that knows exactly what to look for in a picture.



Any way you look at it, the Dynaflex 7xi's Expert AE System is a remarkable photographic development. Using fuzzy logic, the Dynaflex 7xi can immediately identify whether the picture you want is a vast, sweeping landscape or an extreme close-up. An athlete in action or a formal portrait. Or anything in between. This Expert AE System can set the proper exposure if your main subject is strongly backlit, if an overall scene is evenly lit, or if lighting conditions rapidly change. With the Dynaflex 7xi, you can capture your subject as it naturally appears. Or in a way only your mind could envision.



Precise exposure readings, from one corner of the frame to the other, are perfectly synchronized with AF functions, so every picture you take with the Dynaflex 7xi is beautifully exposed.

Center Subject Photo

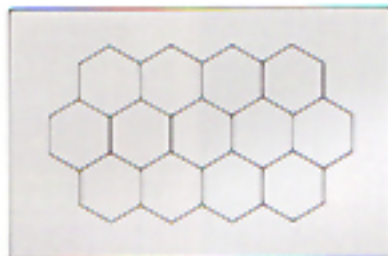


Honeycomb Metering Because AF-Integrated 14-Segment Honeycomb-Pattern Metering measures 14 separate areas across the entire picture frame, the Dynax 7xi is able to correctly set exposure whether your subject is centered in the frame, or is off to one side. In addition, the exposure readings from each portion of the honeycomb pattern, plus the background area, are immediately analyzed by the Dynax 7xi's Expert Intelligence System and perfectly integrated with autofocus operations to provide an extremely fast response in any lighting condition.

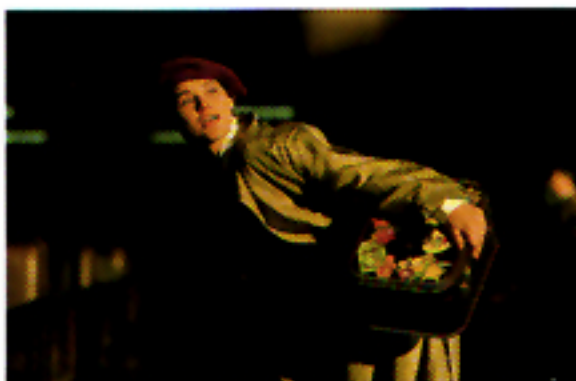


Small Subject Photo

Vertical Subject Photo



AF-Integrated 14-Segment Honeycomb-Pattern Metering precisely measures subject brightness in 13 separate parts of the honeycomb pattern, as well as the background, to provide the optimum exposure for any situation.



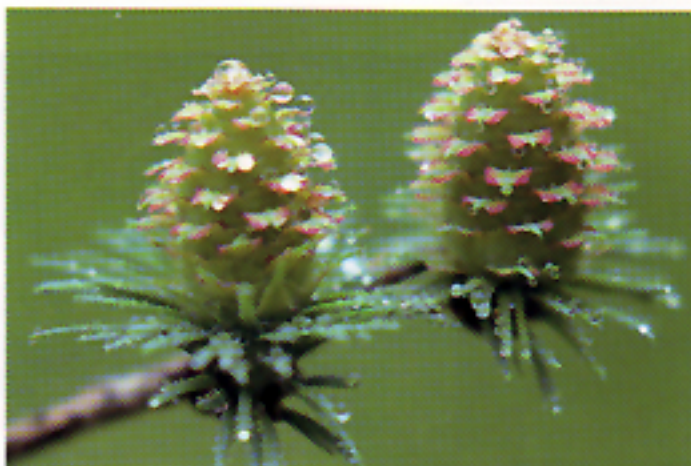
Spot Metering To provide extremely precise exposure control of what you consider the most important parts of your subject, the center segment in the honeycomb pattern may be individually selected to measure subject brightness in one small portion of a scene. You'll also find this feature especially useful whenever subject contrast becomes challenging.



Expert Program Selection For a beautifully exposed picture of almost any scene, all you really have to do is aim the Dynax 7xi and press the shutter-release button. Its Expert Program Selection automatically does the rest.

Expert Program Selection weighs all the factors that effect exposure. It considers the focal length of the lens in use and analyzes equally vital information about your subject, including its size and distance from the camera. Using fuzzy logic, it also has the remarkable ability to recognize practically any type of scene, from landscapes to close-ups. And if either your subject or the camera is moving, the optimal shutter speed and aperture are automatically selected to freeze the action on film.

You may also manually select one specific CCD sensor to control the exposure you want in one portion of a scene, or to ensure that other objects don't interfere with the exposure of your main subject.



When the Dynax 7xi recognizes the scene as a closeup, it tries to find the optimum balance between a small aperture for increased depth of field and a quick shutter speed to prevent blur due to camera shake.

A large degree of subject motion causes the Dynax 7xi to favor faster shutter speeds. However, the reduced depth of field which results from the larger apertures is not a problem for the Dynax 7xi's ultra-wide focus area and highly sensitive CCD sensors.

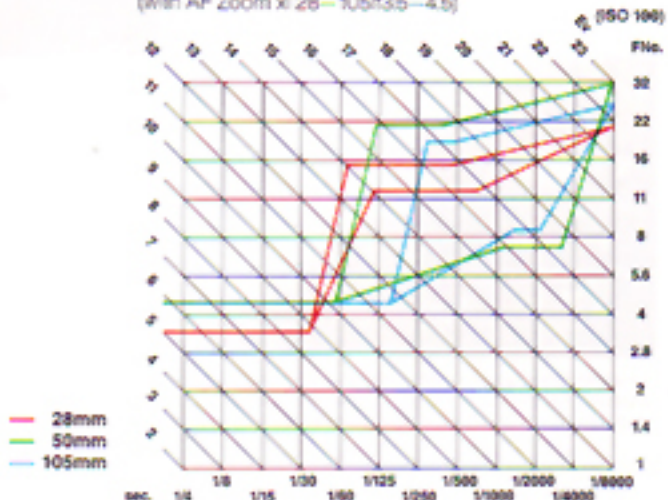


Closeup portraits require less depth of field in order to isolate focus of the main subject. As a result, the Dynax 7xi selects faster shutter speeds that make it easier to capture fleeting expressions.



When the Dynax 7xi detects the characteristics of a landscape or a distant portrait, it aims for maximum depth of field to bring every detail into focus, and at the same time, maintains the proper exposure setting for your subject.

Expert Program Selection
(with AF Zoom x: 28-105/3.5-4.5)



PA/Ps Creative Program Control

From P Mode, a quick turn of the front or rear control dial gives you immediate control of either aperture or shutter speed settings. An index in the viewfinder indicates the approximate changes in respect to the depth of field or subject movement that will appear as a result of the decisions you make.

Image-Control Index

With Image-Control Index, the Dynax 7xi makes it easy to realize the full potential of the SLR format. Whenever you manually adjust either the shutter speed or aperture by turning the front or rear control dial without leaving program mode, easy-to-identify indicators appear in both the LCD viewfinder and the data panel. These allow you to continuously monitor all setting adjustments and visualize what your final image will look like. In P, PA or A mode, an indicator will appear to show approximately how much, or how little, depth of field your picture will contain. In Ps or S mode, you can see how different shutter speeds effect the way a moving subject will appear as a printed image.

Depth Index



If the depth index is on the left side of the viewfinder, only your subject will appear sharply focused. By turning the rear control dial to the right, you can change the aperture to increase the depth in your picture.

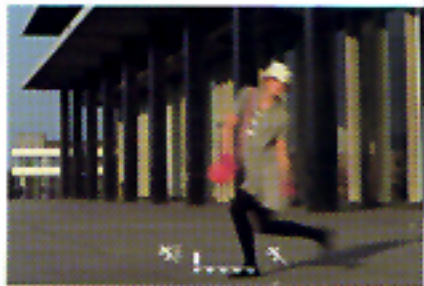


Two easy-to-reach dials put the ultimate in depth-of-field and motion control at your fingertips.

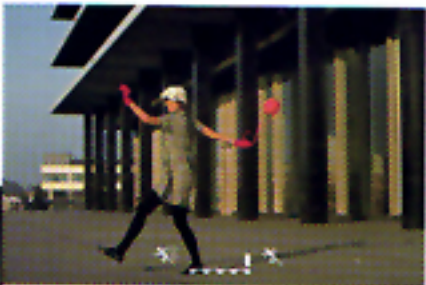


In program mode, the depth index at the bottom of the viewfinder screen shows approximately how background areas will appear in your final print. If the depth index appears on the right side of the viewfinder, everything from your main subject to infinity will remain in focus.

Action Index



By turning the front control dial to the left, you can choose slower shutter speeds and the aperture will automatically be adjusted to maintain the correct exposure.



To replace the depth index with the action index, simply turn the front control dial. This indicator will show the approximate action-stopping ability a particular shutter speed setting will provide. Turning this dial to the right allows you to select faster shutter speeds to stop action.

Creative Exposure Control In addition to Expert Program Selection, the Dynax 7xi's primary exposure mode, three additional modes may be easily selected for more creative exposure control.

A Mode In aperture priority mode, you may select exactly the aperture you want, in 1/2-stop increments, to control the depth of field for your subject. A larger aperture will blur the background area of a picture. A smaller aperture will keep more of the scene in front and behind your main subject in focus.

S Mode In shutter priority mode, you can capture moving subjects in precise focus in a wide variety of ways. Simply turn the front control dial to manually change the camera's shutter speed in 1/2-stop increments, from 30 seconds to 1/8000th of a second.

M Mode Manual mode gives you complete creative control over the final exposure setting. In this mode, you may adjust the shutter speed in 1/2-stop increments and aperture in 1/2-stop increments to obtain the creative effect you're looking for. The Dynax 7xi will indicate whether an over, under, or correct exposure is possible depending on the settings you have chosen.

Expert Autozoom System

By putting Expert Intelligence to work in the lens as well as the camera, Minolta makes it easy to compose the perfect picture.



Minolta's innovative xi Zoom Lenses and the Dynax 7xi aren't merely compatible, they're made for each other. Whenever you attach one of these new lenses to the camera, their separate Expert Intelligence Systems immediately begin to work in unison to set the focal length and zoom speed needed to select a pleasing picture composition. This eliminates the need for time-consuming manual zoom adjustments. As a result, all Dynax 7xi Autozoom operations are incredibly precise.

Lens/Camera Integration xi Zoom

Because both the Dynax 7xi and new xi Zoom Lenses contain separate Expert Intelligence Systems, more subject information is able to pass in both directions between the lens and the camera body. So instead of setting a focal length that's determined entirely by the lens, or adjusting the zoom speed according to directions given by the camera alone, the lens and camera make all zooming decisions together.

Variable-Speed Power Zoom

Each new xi Zoom Lens features an internal, ultra-compact zoom motor which automatically selects the most appropriate speed, from superfast to slow, to maintain picture composition throughout the focal length of the lens in use. For more zooming versatility, this Variable-Speed Power Zoom may also be manually controlled by turning a spring-loaded ring located on the lens barrel. The faster you turn this ring in either direction, the faster the lens focal length will change.



Auto Stand-by Zoom (ASZ)

Whenever you attach a new xi Zoom Lens to the Dynax 7xi, ASZ activates the instant you look through the viewfinder. Once activated, ASZ immediately measures the distance to your subject and selects a focal length to give your picture a pleasing composition. This makes it entirely effortless to capture fleeting expressions or subtle gestures in beautifully composed pictures.

Wide-View Mode

In Wide-View Mode before the photograph is taken, the lens sets a focal length so that 150% of the picture area can be seen in the viewfinder.



Normal



Wide view mode

Advanced Program Zoom (APZ)

To effortlessly maintain a pleasing picture composition with moving subjects, the Dynax 7xi automatically changes from one-time ASZ to continuous mode APZ whenever you insert the new Child Card into the camera.

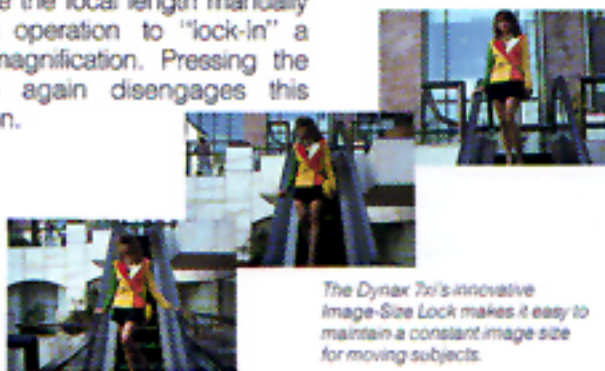
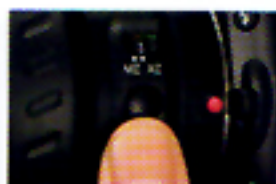
If your subject's distance changes, the focal length will adjust to smoothly and continuously change the magnification of your subject in the frame, to maintain the picture composition throughout the zoom range of the lens in use.



APZ eliminates the need to hunt for the focal length needed to maintain the picture composition you desire for a moving subject.

Image-Size Lock

Now you can automatically maintain the image size you want, even if your subject is moving toward or away from the camera. Simply press the Lens Function Button located on the barrel of any new xi Zoom Lens. By doing this, the focal length will adjust smoothly and continuously to maintain the image magnification size you've chosen. You may also change the focal length manually during operation to "lock-in" a new magnification. Pressing the button again disengages this function.



The Dynax 7xi's innovative Image-Size Lock makes it easy to maintain a constant image size for moving subjects.

Dynax AF Zoom xi Lenses

Minolta's innovative xi Zoom Lenses are much lighter and more compact than conventional zoom lenses with similar zoom ratios. This makes them especially easy to carry and use at sporting events or when travelling.



28-80/4-5.6



28-105/3.5-4.5



35-200/4.5-5.6

*Available end of 1991



80-200/4.5-5.6 Macro



100-300/4.5-5.6 Macro

AF Zoom xi Lens Specifications

Lens	Elements/Groups	Angle of View	Minimum Focus	Minimum Aperture	Filter (dia.)	Dimensions (dia. x length)	Weight
AF Zoom xi 28-80/4-5.6	7/7	75°-30°	0.8m	1:22-32	55mm	72 x 67.5mm	275g
AF Zoom xi 28-105/3.5-4.5	13/10	75°-23°	0.5m (f=28)	1:22-32	62mm	73 x 76.5mm	455g
AF Zoom xi 35-200/4.5-5.6	17/15	63°-12°30'	0.5m (f=35)	1:22-27	62mm	75 x 93mm	500g
AF Zoom xi 80-200/4.5-5.6 Macro	9/9	30°-12°30'	1.5m	1:22-27	55mm	73 x 80mm	300g
AF Zoom xi 100-300/4.5-5.6 Macro	11/9	24°-8°10'	1.5m	1:32-36	55mm	75 x 100mm	410g

Expert Flash System

The Dynax 7xi Expert Flash System let's you take beautifully exposed pictures in bright light, in low light, or in no light at all.



With an advanced built-in autoflash, the Dynax 7xi puts everything you need to master the most advanced flash techniques right in your hands. The flash automatically pops up to provide the additional illumination needed in low light or the fill-flash needed for back-lit subjects. This advanced built-in autoflash makes it easy to take pictures at night or beautifully expose fast moving subjects under rapidly changing lighting conditions. And if you ever need to shed more light on your subject, the Program Flash 3500xi is designed to perfectly integrate with the Dynax 7xi's Expert AF, Expert AE and Expert Autozoom systems.



The Dynax 7xi's advanced built-in autoflash fires automatically to fill in subject shadow areas.

Advanced Built-In Autoflash

The Dynax 7xi's built-in flash is so carefully concealed you don't even know it's there. That is, until the flash automatically pops up and fires to provide exactly the amount of light you need. This powerful built-in flash features a guide number of 12 at ISO 100 in meters to provide full flash coverage for a 28mm lens. A fast, 1/200 sec. flash sync speed also makes it easy to capture moving subjects in difficult lighting conditions. And a short recycling time of about 2 seconds means you're always ready for your next great flash photo opportunity. For further convenience, manual fill-flash or flash-off may also be selected if desired.

Advanced Automatic Fill-Flash

Used alone, the Dynax 7xi's built-in flash provides the fill light necessary to properly balance back-lit subjects with their background.

Red-Eye Reduction Flash

When taking portraits with a flash, subjects appear to have what is commonly called "red eye." This often occurs in low light situations when your subject's pupils are wide open. Under these circumstances, a flash burst can actually reflect off the interior of their eyes and back into the lens during exposure. As a result, your subject's eyes appear red in the printed picture, instead of their natural color.

To reduce this problem, the Dynax 7xi's built-in flash fires several times in rapid succession before the shutter is released to make the opening of your subject's pupils smaller. Then, before your subject's eyes can re-adjust to the ambient lighting, the flash fires when the frame is exposed.



With The Dynax 7xi's Red-Eye Reduction Flash.



Without Red-Eye Reduction.

Program Flash 3500xi



Program Flash 3500xi For greater illumination in low light, or for more flash coverage at longer distances, the Program Flash 3500xi fills your needs completely. This powerful flash is designed specifically for use with the Dynax 7xi. When attached to the camera's hot shoe, the 3500xi's three-beam AF illuminator electronically links with the Dynax 7xi's three main AF sensors, which automatically activate the flash in low light or low contrast situations.

Remote Off-Camera TTL Flash

Control For greater flash versatility, you may also control the Program Flash 3500xi off-camera via remote control. When you use the 3500xi in this manner, the Dynax 7xi's built-in flash and TTL metering system control the flash exposure and the power output of the two units may be manually set to 2:1 lighting ratio. This means the off-camera flash provides 2/3 of the light, while the built-in flash provides the remaining 1/3 of the light needed to correctly expose your subject.



With Off-Camera Flash.



Without.

Zoom Flash When the 3500xi is mounted on the Dynax 7xi, it automatically adjusts flash coverage to precisely match any focal length selected with the camera's standard 28mm—105mm zoom lens. For more control, the flash can also be zoomed manually to 28mm, 50mm or 105mm.



28mm

50mm

105mm

Bounce Flash To provide softer, more natural lighting when taking portraits or group shots indoors, the 3500xi flash head tilts a full 90 degrees. This makes it easy to direct the flash off a ceiling to diffuse harsh shadows.



Slow-Shutter Sync. Add a little extra to your flash photography by pressing and holding the AE lock button while you take a picture. If you are using the built-in flash, a dedicated flash unit, or even the Program Flash 3500xi in remote mode, the Dynax 7xi will set a slower shutter speed and reduce the flash output. This exposes more of the background while keeping your subject precisely illuminated.



A Mode Flash You may manually select any aperture the lens allows in A mode. A larger aperture will provide maximum flash coverage. Smaller apertures will give your picture more depth of field.

M Mode Flash For the utmost in creative flash control, in M mode you may select any aperture within the lens' range, as well as any shutter speed between 1/200 sec. and BULB.

The World's First Graphic Display SLR Viewfinder

The Dynax 7xi is the only AF SLR that puts all the information you need to monitor camera operations right before your eyes.



- 1 Flash-On Indicator
- 2 Flash-Mode Indicator
- 3 Camera-Shake Warning
- 4 Focus Signal
- 5 Exposure-Mode Indicator
- 6 Shutter Speed/Film Speed
- 7 Exposure Signals
- 8 Exposure-Adjustment Indicator
- 9 Aperture/Exposure Adjustment Display
- 10 AEL Indicator

Now, once your subject is in sight, you never have to take your eye off the viewfinder to visualize how the final image will appear on film. Because the Dynax 7xi's Advanced Graphic Display Viewfinder puts all the information you need to monitor all important camera operations, right before your eyes. The focus and exposure modes currently selected, as well as focus and metering areas are indicated. Image Index-Control indicators give you a visual impression of how a moving subject will appear or how much depth your picture will contain. And in wide-view mode, you see the actual image area within 150% viewfinder coverage.



- 1 Front control dial
- 2 Rear control dial
- 3 Dial function selector

Dial Function Indicator



Front: mode selection
Rear: exposure compensation



Front: local AF selection
Rear: multi-pattern/spot metering selection

Pressing the dial function selector once lets you monitor the current function assignments of the front and rear control dials.

Pressing the dial function selector again allows you to change the function assignments of the front and rear control dials.

Depth Index/Action Index



The Depth Index provides a relative indication of how much or how little depth of field will appear using the current exposure settings.



The Action Index provides a relative indication of how a moving subject will appear using the current exposure settings.

Focus Frame



In most situations, the Dynax 7xi's ultra-wide focus area appears.



When you hold the camera vertically, the optimum focus frame for vertical shots is indicated.



One of the four local focus areas may also be shown according to the position of your subject.



Spot Metering Area

When you select spot metering, the corresponding metering coverage is shown. When spot metering is not displayed, multi-pattern metering is selected.



Image Size-Lock Indicator

The Image-Size Lock Indicator is displayed automatically whenever you select image-size lock mode.



Wide-View Indicator

When wide-view mode is selected, the actual image area within 150% viewfinder coverage is shown.



Manual Focus Indicator

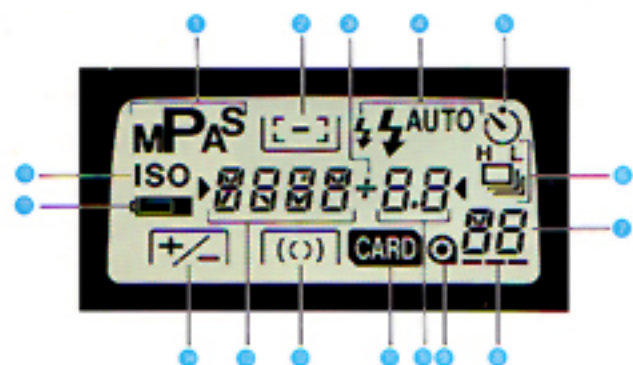
The Manual Focus Indicator is displayed when manual focus mode is selected and the power zoom ring is pulled inward to the focus lock position.



Panorama Indicator

The Panorama Indicator automatically appears on the viewfinder screen whenever the panorama adapter is installed.

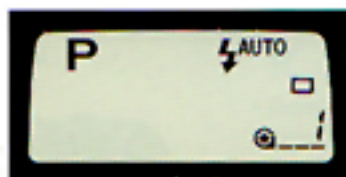
7xi Advanced Graphic Display Body Data Panel



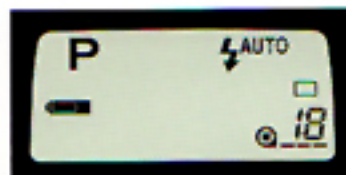
- 1 Exposure-Mode Indicator
- 2 Wide/Local Focus Indicator
- 3 Exposure-Adjustment/Over-Under Indicator
- 4 Flash-Mode Indicator
- 5 Self-Timer Indicator
- 6 Drive-Mode Indicator
- 7 Frame Counter
- 8 Film-Transport Signals
- 9 Film-Cartridge Mark
- 10 Aperture/Exposure-Adjustment/Card-Setting Displays
- 11 Card Indicator
- 12 Metering-Mode Indicator
- 13 Shutter-Speed/Film-Speed/Card Name Displays/Local AF Area Indicators
- 14 Exposure-Adjustment Reminder
- 15 Battery-Condition Indicator
- 16 Film-Speed Mark



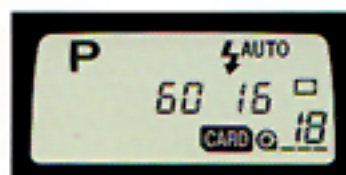
With DX-coded film, the film's ISO speed is set automatically. You can also set the film speed manually or over-ride the DX setting.



When the film is automatically advanced to the first frame, the figure "1" appears in the data panel to confirm correct loading.



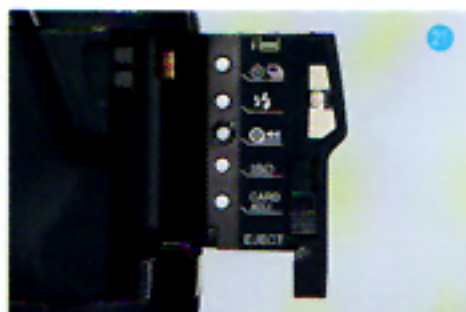
When you slide the main switch to the "ON" position, the camera automatically checks the battery power.



When you use a creative expansion card, the card symbol appears on the data panel.

Other Features





1 AF Illuminator/Self-Timer Light

2 Lens Contacts

3 Mounting Index

4 Flash Pop-Up Button

This allows you to manually pop-up the built-in flash regardless of the ambient light level.

5 Lens-Release

6 Focus-Mode Switch

7 Grip Sensor

8 Mirror

9 Program-Reset Button

Pressing this button cancels all manual adjustments and resets the camera for Program Mode, or you can program it for special settings with the Custom Function Card II.

10 Front Control Dial

11 Shutter-Release Button

12 Viewfinder-Mode Selector

By pressing this button, you can select a wide viewfinder mode. Then, 150% of the actual picture is displayed in the viewfinder, allowing easy confirmation of whether the framing is appropriate for the scene.

13 Card On/Off Button

14 Strap Eyelet

15 Main Switch

16 Accessory Shoe

17 Body Data Panel

18 AE Lock Button

Whenever lighting conditions become difficult or rapidly change, the AE Lock Button allows you to control exposure to creatively emphasize any part of a scene.

19 Rear Control Dial

20 Dial-Function Selector

Pressing this button allows viewfinder indicators for selectable functions to be displayed. These symbols indicate both the function and the control dial to be used for adjustment.

21 Card Door

• Self-Timer/Drive-Mode Button Press to select self-timer mode, single frame film advance, continuous advance Lo (at up to 2-frames-per-second), or continuous advance Hi (at approximately 4-frames-per-second).

• Flash-Mode Button You can select the Pre-flash mode for red-eye reduction, autoflash mode, flash cancel or remote mode.

• Rewind Button

• Film-Speed Button

• Card-Adjust Button

22 Remote-Control Terminal

23 Long Eye-Relief Finder

Lets you use the viewfinder more comfortably by keeping your eye as far back as 19mm from the viewfinder eyepiece frame. This allows easier and faster monitoring of your subject, letting you move your eye back and forth between the subject and viewfinder image. This feature is also an advantage for photographers who wear glasses.

24 Film Window

25 Back-Cover Release

Expert Intelligent Technology

The world's most advanced, most intelligent AF SLR system.

Fuzzy Logic Control Expert systems controlled by conventional logic require huge data bases and large numbers of well-defined rules. If you've ever watched an experienced photographer at work, however, you know that they rarely operate in such a rigidly structured world. Instead, they follow a few "rules of thumb." Precise ideas are often expressed as subjects that are fairly "close-up," or backgrounds that are "just a bit brighter" than the foreground. These are ideas that could never be expressed by traditional logic.

Fuzzy logic not only gives the Dynax 7xi the ability to recognize these grey-areas of the photographic mind, but it also provides a smooth response to changing conditions. And fuzzy logic can condense larger amounts of data into a much smaller set of variable rules. The result is an expert system that can process information faster, and provide a more flexible, more human-like response than conventional logic-based systems.



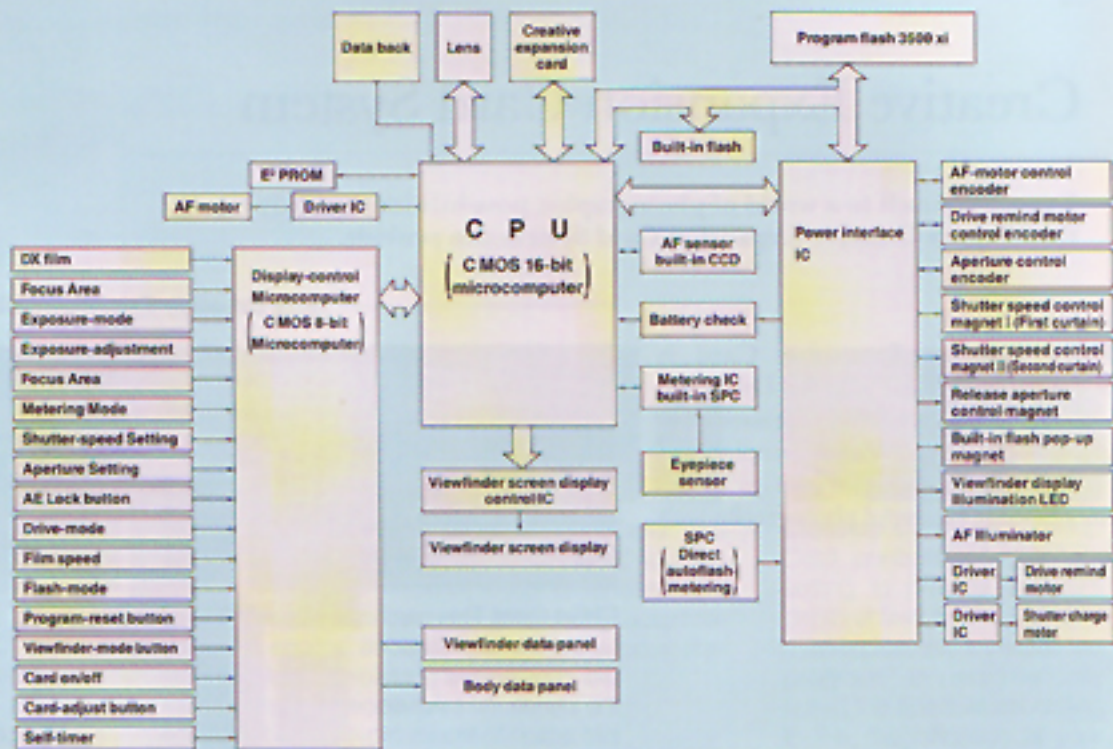
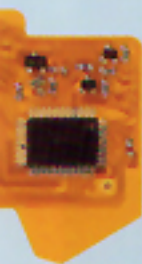
Eye-Start Automation A touch sensor in the Dynax 7xi's grip activates an infrared emitter/detector located beneath the viewfinder eyepiece when you grasp the camera. When this infrared sensor detects an object, it immediately brings AF, AE and ASZ on-line. The Expert AF System begins evaluating the scene to determine the main subject. Expert AE selects the proper pattern and weighting from the



IR receiver

IR emitter

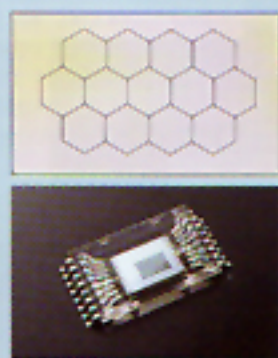
AEL



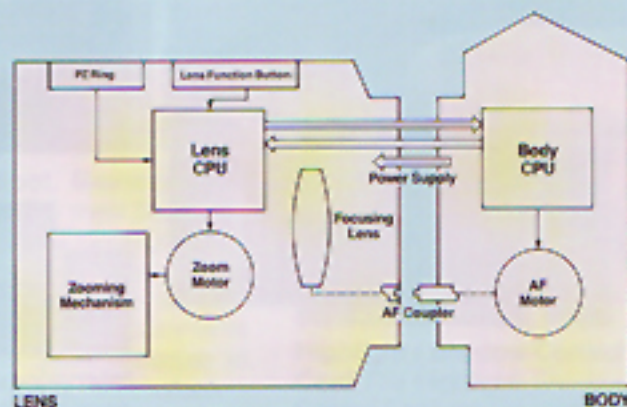
14-segment honeycomb pattern metering system and Expert Autozoom sets a starting focal length—all before you even touch the shutter release button.

The end result is that the Dynax 7xi has the fastest response of any AF SLR. As long as you are looking through the viewfinder, the camera is at your control, ready to create images.

ES
Eye Start
Automation



AF-Integrated 14-Segment Honeycomb-Pattern Metering The Dynax 7xi's silicon photo cell (SPC) is divided into 14 segments—13 in the honeycomb pattern plus the background. With information supplied from the AF system, the metering pattern adjusts according to your subject's position within the AF area. Because the honeycomb's individual segments are of a uniform size and distributed evenly, the system can accurately detect special situations such as back- or spot-lighting and compensate the exposure accordingly. If the main subject is moving through the frame, the Expert AE's fuzzy logic control smoothly adjusts the metering pattern and weighting to provide a consistent exposure.



Expert Autozoom System The Dynax 7xi, as well as each new xi-Series Autozoom Lens has three extra contact pins. Two of these supply power from the camera's battery to the zoom motor. The third pin is used to pass information in both directions between the lens and the camera. So when one of these new lenses is attached to the Dynax 7xi, the two become one fully-integrated photographic system. The lens sends over thirty pieces of data regarding its own specifications and current settings, some of which must be constantly updated. The camera uses this to determine both subject position and exposure pattern. Based on the subject position obtained from the camera, the lens then calculates and sets its focal length.



Creative Expansion Card System

Expose yourself to a world of photographic possibilities that only the Minolta Creative Expansion Card System can provide.

Every Creative Expansion Card is designed to interface with the Dynax 7xi just like a sophisticated software program works in a computer. Simply slip a card into the card door slot to create unbelievably beautiful photographs with surprising ease.

New Creative Expansion Cards



Child Card This card is at its best for capturing the spontaneous actions and candid expressions of children at play. It puts the Dynax 7xi's Advanced Program Zoom into action to freeze moving children at the peak of action.

*Available end of 1991.



Panning Card When you insert the Panning Card into the Dynax 7xi, the action index is displayed in the camera's viewfinder to help you create a desired photographic effect. As the camera is panned to follow a moving subject, the action index shows you approximately how the shutter speed in use will express your subject's movement.



Intervalometer Card This card lets you enjoy shooting at preset intervals to take time-lapse pictures of subjects such as a flower blooming or the sun rising. The length of the intervals can be set up to 24 hours.



Travel Card This card automatically adjusts the depth of field to provide maximum sharpness for the scene you're shooting and biases the Dynax 7xi's ASZ program for wider focal length settings. This is especially useful for photographing a friend or family member in front of a landmark or other interesting location.

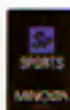


Background Priority Card This card works with the Image-Control Index to help you select a desired background sharpness using the viewfinder's depth index. This lets you maintain the preset background sharpness you've chosen, regardless of the focal length of the lens in use and the distance between you and your subject.

Customized Function Card xi The Customized Function Card xi lets you reprogram a wide range of camera functions to fit your personal style of photography, including:

- Standard setting when the Program-Reset button is pressed
- Exposure Modes: P/A/S/M
- Exposure Adjustment: -4.0 to +4.0
- Metering Mode: 14-segment Honeycomb Metering/Spot Metering
- AF Area: Wide/Center area
- Frame Counter: Increasing or decreasing numbers
- Film rewind: Automatic or manual start
- Film leader: Rewound into cartridge or left out
- Auto DX Memory: On or Off
- Automatic Flash when required in P Mode: On or Off
- AF Control Button:
(on AF 70-210mm Zoom,
AF 100-300mm Zoom,
AF 200mm Apo, AF 300mm Apo,
AF 600mm Apo, AF Reflex 500mm);
Focus-hold, center area AF,
continuous AF
- Automatic grip sensor activation:
On or Off

Once you've changed the functions you want, just remove the card and the camera will operate according to your changes.



Sports Action Card The Sports Action Card uses a special high-speed exposure program that maintains a fast shutter speed to freeze sports action and other fast-moving subjects.



Flash Bracketing Card This card automatically lets you bracket a series of 3, 5 or 7 flash pictures which differ by a selectable exposure change (0.5 or 1 stop). It conveniently automates a process that many demanding photographers, who require a high degree of exposure accuracy, currently handle manually.



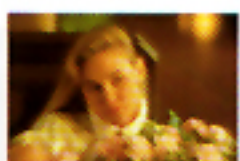
Multiple Exposure Card This card opens the door to a world of creative possibilities. It allows you to make up to nine separate exposures on a single frame, using any of three selectable modes: Normal, Fade-In and Fade-Out.



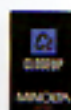
Automatic Program Shift Card The Automatic Shift Card automatically exposes a three-frame series of shots with a preset program shift between each frame. The programmed shutter-aperture combination is automatically varied without changing exposure. You can set the shift to 1, 2 or 3 stops.



Exposure Bracketing Card This card automatically lets you vary the exposure in a series of shots to achieve the best creative effect. With this card you can bracket a series of 3, 5, or 7 frames which differ by 0.3-, 0.5- or 1-stop changes in exposure between frames.



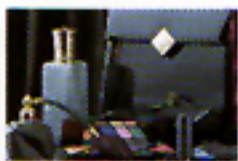
Fantasy Effect Card The Fantasy Effect Card lets you create a soft, dreamlike effect in your picture by automatically changing the focus during exposure.



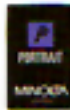
Closeup Card The Closeup Card controls the aperture setting to provide optimum depth of field for closeup and macro pictures. It causes the program to automatically adjust the aperture according to the magnification of your subject.



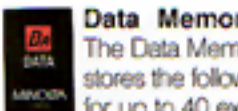
Multi-Spot Memory Card Designed to meet the needs of advanced photographers, the Multi-Spot Memory Card accommodates up to eight spot exposure measurements, then calculates exposure as an average of these values.



Highlight / Shadow Control Card The Highlight/Shadow Control Card lets you use the camera's spot-metering system to make highlight—or shadow-biased exposures. With this card, the camera adjusts the exposure to reproduce highlight and shadow areas more naturally. Highlight exposures are increased 2.3 stops from normal value and shadow exposures are decreased 2.7 stops.



Portrait Card The Portrait Card uses a special exposure program to maintain the best aperture and shutter speed for hand-held portraits. The program automatically adjusts the aperture and shutter speed to make your subject stand out from the background.



Data Memory Card The Data Memory Card stores the following data for up to 40 exposures; exposure mode, shutter speed, aperture, lens focal length, maximum aperture of the lens and exposure adjustment. You can recall data to the data panel when you want to check the settings used for previous exposures.

Autofocus Lens System

Minolta offers the world's largest selection of autofocus lenses, from 16 mm Fisheye to 600 mm Apo Telephoto. Every Minolta lens is the product of the most advanced optical and electronic technology photography has to offer. You will benefit from Minolta's leadership in autofocus technology.



AF 16mm f/2.8
Fisheye



AF 20mm f/2.8



AF 24mm f/2.8



AF 28mm f/2



AF 28mm f/2.8



AF 35mm f/1.4



AF 35mm f/2



AF 50mm f/1.4



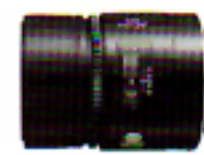
AF 50mm f/1.7



AF 85mm f/1.4



AF 100mm f/2



AF 135mm f/2.8



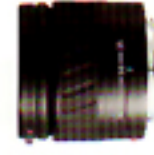
AF 50mm f/2.8 Macro



AF 100mm f/2.8 Macro



AF 24-50mm f/4



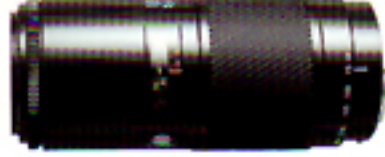
AF 35-80mm
f/4-5.6



AF 35-105mm
f/3.5-4.5



AF 70-210mm
f/3.5-4.5



AF 75-300mm f/4.5-5.6



AF 80-200mm
f/4.5-5.6



AF 80-200mm f/2.8 Apo



AF 100-300mm
f/4.5-5.6



AF Reflex 500mm f/8



AF 200mm f/2.8 Apo



AF 300mm f/2.8 Apo



AF Macro Zoom
3X-1X f/1.7-2.8



AF 600mm f/4 Apo



AF 1.4X Tele
Converter II Apo



AF 2X Tele
Converter II Apo

Telephotos, Wideangles, Macros, Zooms. They change the way your camera sees a scene. They provide you with the right degree of coverage for each photographic situation.



16 mm



20 mm



24 mm



28 mm



35 mm



50 mm



85 mm



100 mm



135 mm



210 mm



300 mm



600 mm

AF Lens Specifications

Lens	Elements/Groups	Angle of View	Minimum Focus	Minimum Aperture	Filter (dia.)	Dimensions (dia. x length)	Weight
AF 16/2.8 Fisheye	11/8	180°	0.2m	f/22	integral	75 x 66.5mm	400g
AF 20/2.8	10/9	94°	0.25m	f/22	72mm	77.5 x 53.5mm	285g
AF 24/2.8	8/8	84°	0.25m	f/22	55mm	65.5 x 44mm	215g
AF 28/2	9/9	75°	0.3m	f/22	55mm	66.5 x 49.5mm	285g
AF 28/2.8	5/5	75°	0.3m	f/22	49mm	65.5 x 42.5mm	185g
AF 35/1.4	10/8	63°	0.3m	f/22	55mm	65.5 x 76mm	470g
AF 35/2	7/6	63°	0.3m	f/22	55mm	66.5 x 48.5mm	240g
AF 50/1.4	7/6	47°	0.45m	f/22	49mm	65.5 x 38.5mm	235g
AF 50/1.7	6/5	47°	0.45m	f/22	49mm	65.5 x 39mm	170g
AF 85/1.4	7/6	28°30'	0.85m	f/22	72mm	78 x 71.5mm	550g
AF 100/2	7/6	24°	1.0m	f/32	55mm	67 x 75.5mm	480g
AF 135/2.8	7/5	18°	1.0m	f/32	55mm	65.5 x 83mm	365g
AF 200/2.8 Apo	8/7	12°30'	1.5m	f/32	72mm	86 x 134mm	790g
AF 300/2.8 Apo	11/9	8°10'	2.5m	f/32	integral	128 x 238.5mm	2480g
AF 600/4 Apo	10/9	4°10'	6.0m	f/32	integral	169 x 449mm	5500g
AF Reflex 500/8*	7/5	5°	4.0m	—	integral	89 x 118mm	665g
AF 24-50/4	7/7	84°-47°	0.35m	f/22	55mm	69 x 60mm	285g
AF 35-80/4-5.6	8/8	63°-30°	0.5m	122-32	46mm	65 x 58mm	195g
AF 35-105/3.5-4.5	12/10	63°-23°	0.85m	f/22-27	55mm	68.5 x 59.5mm	290g
AF 70-210/3.5-4.5	12/12	34°-12°	1.1m	f/22-27	55mm	72.5 x 100mm	420g
AF 75-300/4.5-5.6	13/11	32°-8°10'	1.5m	f/32-38	55mm	72.5 x 163.5mm	865g
AF 80-200/2.8 Apo	16/13	30°-12°30'	1.8m	f/32	72mm	87.5 x 166.5mm	1360g
AF 80-200/4.5-5.6	9/9	30°-12°30'	1.5m	f/22-27	46mm	67 x 78mm	290g
AF 100-300/4.5-5.6	11/9	24°-8°10'	1.5m	f/32-38	55mm	72.5 x 100mm	410g
AF 50/2.8 Macro	7/6	47°	0.2m	f/32	55mm	68.5 x 59.5mm	310g
AF 100/2.8 Macro	8/8	24°	0.35m	f/32	55mm	71 x 98.5mm	520g
AF Macro Zoom 3X-1X/1.7-2.8	7/5	8 x 12mm (3X)** 24 x 36mm (1X)**	Working Distance 25mm (3X) 40mm (1X)	f/16 (3X) f/27 (1X)	46mm	86 x 117 x 94.5mm***	1100g
AF 1.4X Tele Converter II Apo****	5/4	—	—	—	—	64 x 20mm	175g
AF 2X Tele Converter II Apo*****	6/5	—	—	—	—	64.5 x 43.5mm	210g

Notice: When used with Dynax 7xi, all AF lenses can be operated in either autofocus or manual focus mode. Expert Autozoom features (ASZ, APZ, Wide-View Mode, Image-Size Lock) cannot be used.

Specifications and accessories are based on the latest information available at time of printing and are subject to change without notice.

*Use with Dynax 7xi, Dynax 8000i, 7000i or 5000i, can be operated in either autofocus or manual focus mode; with other Minolta AF SLR cameras (Dynax 3000i, 5000i, 7000i, 9000i) manual focus only, by reference to the viewfinder screen, is possible.

**Size of subject that fills the film plane

***W x H x D

****For use with AF 200/2.8 Apo, AF 300/2.8 Apo, and AF 600/4 Apo lenses only; cannot be used with AF 80-200/2.8 Apo Zoom lens.

*****For use with AF 200/2.8 Apo, AF 300/2.8 Apo lenses only; cannot be used with AF 600/4 Apo, and AF 80-200/2.8 Apo Zoom lenses.

System Accessories

The world's most complete autofocus SLR system.



Quartz Data Back QD-7 The Dynax 7xi's Quartz Data Back QD-7 lets you imprint the date or time on your pictures. It gives you the choice of printing the data as day/month/year, month/day/year or year/month/day. You can also print the time of exposure in your choice of the 24-hour or 12-hour time format with symbols for AM or PM. Data imprinting may also be turned off if you wish.



Macro Flash 1200AF Set-n This set provides your Dynax 7xi with versatile illumination for macro shooting in medical, scientific and hobby photography.



Panorama Adapter Set Attach it to the Dynax 7xi and you can take panoramic pictures of nature and city scenes. Use of this panorama adapter is automatically indicated on the Dynax 7xi's viewfinder screen.



Program Flash 5200i The most powerful flash unit available for the Dynax 7xi. Suitable for a wide spectrum of flash situations, it features a powerful guide number of 52 in meters at ISO 100. It is also the first flash unit of its kind to offer multi flash settings up to 50Hz. It has a two-way bounce head that pivots 90-degrees upwards and 270-degrees side-to-side.



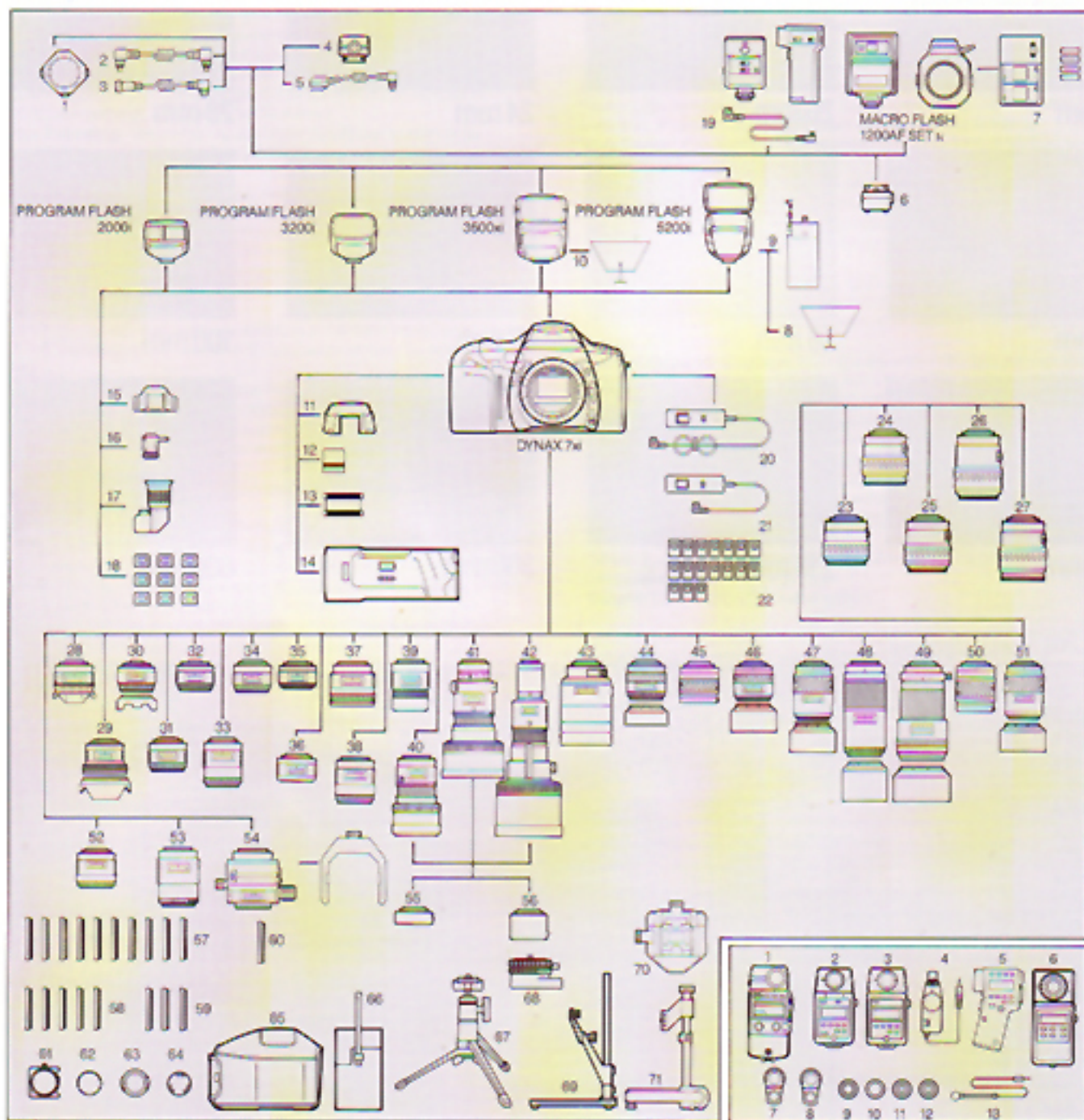
Macro Stand 1000 A rigid camera support that assures maximum stability in all close-up/macro work. This unit is exclusively designed for use with Dynax cameras with the Minolta AF 50mm Macro lens, AF 100mm Macro lens and the Slide Copy Unit 1000. It features a heavy-duty baseboard with the mounting index mark for the Slide Copy Unit 1000 and a rigid tube to provide sturdy support for the camera and macro equipment.

Slide Copy Unit 1000 This handy unit can be attached to the Minolta AF Macro Zoom 3X-1X lens for copying transparencies up to 35mm in mounts or strips. It also provides great versatility in cropping slides; up to 3.0X magnifications may be achieved.



Wireless Controller IR-1N Set This accessory lets you operate the Dynax 7xi by wireless remote control from up to 60 meters away. Three separate channels allow any number of cameras to be operated simultaneously or independently in up to three individual groups.

System Chart



Flash Accessories

- 1 Triple Connector TC-1000
- 2 Cable CD
- 3 Cable EX
- 4 Off Camera Shoe OS-1000
- 5 Off Camera Shoe OC-1000
- 6 Flash Shoe Adapter FS-1100
- 7 Ni-Cd Charger NC-2
- 8 External Battery Pack EP-1 Set
- 9 Bounce Reflector III Set
- 10 Bounce Reflector IV Set

	3500i	5200i	3200 2000i	1200AFxi
1	★	★	★	
2	★	★	★	
3	★	★	★	
4	★	★	★	
5	★	★	★	
6	★	★	★	
7	★	★	★	
8	★	★	★	★
9	★	★	★	
10	★	★	★	

Camera Accessories

- 11 Eyepiece Cup EC-7xi
- 12 Accessory Shoe Cap SC-7xi
- 13 Panorama Adapter
- 14 Data Back OD-7
- 15 Eyepiece Cap
- 16 Magnifier Vii
- 17 Angleminder Vii
- 18 Eyepiece Connector 1000
- 19 Wireless Controller IR-1i Set*
- 20 Remote Cord RC-1000L

- 21 Remote Cord RC-1000S
- 22 Creative Expansion Card**
- 23 AF \times 28-80mm f4-5.6
- 24 AF \times 28-105mm f3.5-4.5
- 25 AF \times 80-200mm f4.5-5.6
- 26 AF \times 100-300mm f4.5-5.6
- 27 AF \times 35-200mm f4.5-5.6***
- 28 AF 16mm f2.8 Fisheye
- 29 AF 20mm f2.8
- 30 AF 24mm f2.8

- 31 AF 28mm f2
- 32 AF 28mm f2.8
- 33 AF 35mm f1.4
- 34 AF 35mm f2
- 35 AF 50mm f1.4
- 36 AF 50mm f1.7
- 37 AF 85mm f1.4
- 38 AF 100mm f2
- 39 AF 135mm f2.8
- 40 AF 200mm f2.8 Apo
- 41 AF 300mm f2.8 Apo
- 42 AF 600mm f4 Apo
- 43 AF Reflex 500mm f8
- 44 AF 24-50mm f4
- 45 AF 35-80mm f4-5.6
- 46 AF 35-105mm f3.5-4.5
- 47 AF 70-210mm f3.5-4.5
- 48 AF 75-300mm f4.5-5.6
- 49 AF 80-200mm f2.8 Apo
- 50 AF 80-200mm f4.5-5.6
- 51 AF 100-300mm f4.5-5.6
- 52 AF 50mm f2.8 Macro
- 53 AF 100mm f2.8 Macro
- 54 AF Macro Zoom 3K-1X f1.7-2.8
- 55 AF 1.4X Tele Converter II Apo
- 56 AF 2X Tele Converter II Apo

- 57 Filters
- 58 Polarizer Filters
- 59 Close-up Lenses
- 60 Step-Up Adapter Filter Ring
- 61 Gelatin Filter Holder
- 62 Body Cap
- 63 Front Lens Cap
- 64 Rear Lens Cap
- 65 Camera Case
- 66 Lens Case
- 67 Mini Tripod TR-1
- 68 Panorama Head II
- 69 Copy Stand III
- 70 Slide Copy Unit 1000
- 71 Macro Stand 1000

Meters

- 1 Flash Meter IV
- 2 Auto-Meter III
- 3 Auto-Meter III
- 4 Booster II
- 5 Spotmeter F
- 6 Color Meter II
- 7 Viewfinder 5"
- 8 Viewfinder 10"

- 9 4X & 8X Spherical ND Diffuser
- 10 Spot Mask
- 11 Flat Diffuser
- 12 Reflected-Light Attachment
- 13 Mini Receiver

* Usable only with Dynax 7xi with Flash Shoe Adapter FS-1100
 ** Intervalometer Card, Background Priority Card, Panning Card, Customized Function Card xi, are usable only with Dynax 7xi.
 *** For optimum performance and to obtain the benefits of the AF xi Zoom lenses, we recommend the use with Dynax 7xi.

MINOLTA DYNAX 7xi TECHNICAL SPECIFICATIONS

Type: 35mm SLR with expert control of autofocus (AF), autoexposure (AE), and autozoom (AZ); auto film transport, built-in motor drive, and built-in flash

Lens Mount: Minolta A-type bayonet mount; accepts all Minolta AF lenses and new xi-Series Autozoom lenses

Eye-Start System: AF, AE, and AZ automatically activated by combination of eyepiece sensors and grip sensors

AF System: Minolta's through-the-lens (TTL) phase-detection system with four CCD sensors; activated by Eye-Start; Multi-Dimensional Predictive Focus Control; built-in AF illuminator automatically activated in low-light/low-contrast conditions; AF sensitivity range: EV -1 to 19 (at ISO 100 in ambient light) AF illuminator range: 0.7 to 9m (based on Minolta's standard test methods using a 50mm f/1.4 lens)

Manual Focusing: Visually on Acute-Matte viewfinder screen or by monitoring focus in viewfinder data panel

Metering: TTL-type; 14-segment honeycomb-pattern silicon photo cell (SPC); automatically activated by Eye-Start; second SPC for TTL flash metering of built-in flash or other dedicated flash units; metering modes: honeycomb-pattern or spot range; honeycomb-pattern: EV 0-20 Spot metering: EV 3-20 (ISO 100, 50mm f/1.4 lens)

Exposure Modes: Program AE: Automatic control of aperture and shutter speed depending on lens specifications and scene characteristics; P_s, P_s Creative Program Control

Aperture-priority AE: Any available aperture in 1/2-stop increments; shutter speed set steplessly from 1/8000 to 30 sec. automatically by autoexposure program

Shutter-priority AE: Any shutter speed from 1/8000 to 30 sec. selectable in 1/2-stop increments; aperture set automatically by autoexposure program

Manual: Any shutter speed/aperture combination selectable in 1/2-stop increments; correct and over/under-exposure indicated in viewfinder; BULB setting also selectable

Built-in Flash: Guide number 12; coverage for 28mm field of view; approx. 2 sec. recycle time

Modes: single-burst, pre-flash, flash-cancel, wireless remote

TTL Flash Metering: Operates in all flash modes with dedicated units; x-sync shutter speed automatically set when flash-on signal appears in viewfinder; in P, A, or S mode, pressing AE-lock button sets slower shutter speed (down to 30 sec.) to balance flash with ambient lighting

Program AE: Aperture and shutter speed set automatically; built-in or accessory flash fires automatically when necessary

Shutter-priority AE: Aperture and shutter speed set automatically; flash will fire only if popped-up (built-in flash) or turned on (accessory flash)

Aperture-priority AE: Any available aperture usable; shutter speed automatically set to 1/200 sec.; flash will fire only if popped-up (built-in flash) or turned on (accessory flash)

Manual: Any available shutter speed or aperture usable; flash will fire only if popped-up (built-in flash) or turned on (accessory flash)

Exposure compensation: +/- 4 stops in 1/2-stop increments

Shutter: Electronically-controlled, vertical-traverse, focal-plane type

Automatic speeds: In program and aperture-priority AE modes, stepless 1/8000 to 30 sec. with nearest half-stop displayed

Manual speeds: In shutter-priority AE and manual modes, 1/8000 to 30 sec. in 1/2-stop increments plus BULB in manual mode

Expert Autozoom (with xi-Series Autozoom lens):

ASZ: Programmed selection of focal length based on subject distance; automatically activated by Eye-Start

APZ: Programmed, continuous setting of focal length based on changing subject position (only with specified CE Cards)

Image-Size Lock: Continuous setting of focal length to maintain image size

Wide-View Mode: Focal length re-set to allow viewing of 150% of actual image area until shutter release is pressed halfway down

Film-speed Setting: Automatic setting for DX-coded films; for films without DX-coding, ISO 100 is automatically set, manual setting also possible

Automatic range: ISO 25-5000 in 1/3-stop increments

Manual range: ISO 6-6400 in 1/3-stop increments

Film transport: Automatic with built-in motor drive; auto threading, auto advance to first frame; single-frame advance or 2-speed continuous advance at up to 4 frames per second; automatic rewind or manual start of rewind; frame counter in body data panel

Controls: Buttons for self-timer/drive mode, manual start of film rewind, flash mode, film speed, viewfinder mode, card on/off, AE lock, dial function selection, P-reset, card adjust, main switch, dual control dials

Viewfinder: Eye-level fixed pentaprism showing 92% of vertical and 94% of horizontal field of view; magnification 0.75X with 50mm lens at infinity; transparent LCD screen and Acute-Matte screen

Viewfinder displays: Inside-screen: Image-control index, control dial indicators, AF area indicators, spot metering area, panorama indicator, wide-view mode indicator, manual focus indicator, image-size lock indicator, film frame in wide-view mode

Outside-screen: Flash-on indicator, flash-mode/flash-ready indicator, camera-shake indicator, shutter-speed/film-speed indicator, exposure signal/exposure-adjustment indicator, aperture/reexposure-compensation display, AEL indicator

Body data panel displays: LCD display with indicators for exposure mode, wide/total focus area, flash mode, self-timer, drive mode, frame counter, film-loaded, card activated, metering mode, exposure-compensation, battery condition, ISO, shutter speed/film speed/card name, aperture/exposure compensation/card settings

Power: 6-volt 2CR5 lithium battery; automatic battery check when camera is turned on; battery condition indicated by four-stage indicator in body data panel; shutter locks when battery is exhausted

Self-timer: Electronic with 10-sec. delay; cancelable; operation indicated by blinking LED

Other: Eyepiece cap, film window, remote-control socket, carrying strap

Dimensions: 163 x 100 x 67 mm

Weight: 650g without lens and battery

Specifications and accessories are based on the latest information available at the time of printing and are subject to change without notice.

Program Flash 3500xi TECHNICAL SPECIFICATIONS

Metering: Direct Autoflash Metering in all flash modes

Controls: ON/OFF button, Power-level selector, Zoom button

Flash coverage: Internal power zoom system automatically, steplessly adjusts flash coverage for focal lengths from 28-105mm; manual adjustment of coverage possible for 28, 50 and 105mm

Power: Four AA-size 1.5-volt alkaline or 1.2-volt Ni-Cd batteries

Guide number at ISO 100 (in meters):

	28mm	35mm	50mm	80mm	105mm
Normal	22	26	29	33	35
Low	5.5	6.5	7.3	8.3	8.8

Optional accessories: Bounce Reflector N Set, Wireless Crip, Cable CD, Cable EX, Off-Camera Shoe OS-1100, OFF-Camera Cable OC-1100, Triple Connector TC-1000, Ni-Cd charger NC-2 with batteries

Dimensions: 76 x 105 x 99 mm

Weight: 230g

NOTE: The Minolta Dynax System is designed and produced to offer innovative functions and performance through the combination of Minolta Dynax camera bodies, Minolta AF lenses, Minolta Program Flash units and other accessories distributed by Minolta. We thus caution users that the attachment or use of incompatible lenses, flashes, or accessories may result in unsatisfactory performance or damage to the Minolta Dynax cameras or their system accessories. For optimum performance throughout the life of the Minolta Dynax cameras and their accessories and to obtain the benefits of future Minolta Dynax system products, we recommend use only of lenses, flashes and other accessories distributed by Minolta for the Minolta Dynax camera.

Minolta Camera Co., Ltd.

Minolta GmbH
Minolta France S.A.
Minolta (UK) Limited
Minolta Austria Gesellschaft m.b.H.
Minolta Camera Benelux B.V.
Belgium Branch
Minolta (Schweiz) AG
Minolta Svenska AB
Minolta Corporation
Head Office
Los Angeles Branch
Chicago Branch
Atlanta Branch
Minolta Canada Inc.
Head Office
Montreal Branch
Vancouver Branch
Minolta Hong Kong Limited
Minolta Singapore (Pte) Ltd.

3-13, 2-Chome, Azuchi-Machi, Chuo-Ku, Osaka 541, Japan

Kurt-Fischer-Strasse 50, D-2070 Ahrensburg, Germany
367 bis, rue d'Estienne d'Orves, 92700 Colombes, France
1-3 Tonners Drive, Bickelands North, Milton Keynes, MK4 5BU, England
Amalienstrasse 59-61, 1131 Wien, Austria
Zonnebaan 39, 3806 CH Moorsebroek, P.B. 264, 3800 AG-Maarssen, The Netherlands
Stenen Brug 115-117, 2200 Antwerpen, Belgium
Riedhof V, Riedstrasse 6 8963 Dietikon-Zürich, Switzerland
Brännkyrkogatan 64, Box 17074, S-10462 Stockholm 17, Sweden

101 Williams Drive, Ramsey, New Jersey 07446, U.S.A.
1160 Hope Street Cypress, CA 90630, U.S.A.
3000 Tollview Drive, Rolling Meadows, IL 60008, U.S.A.
5904 Peachtree Corners East, Norcross, GA 30071, U.S.A.

369 Britannia Road East, Mississauga, Ontario L4Z 2H6, Canada
3405 Timmers Blvd., St. Laurent, Quebec H4R 1V5, Canada
105-3830 Jacombs Road, Richmond, B.C. V6V 1Y8, Canada
Room 208, 2/F, Eastern Center, 1065 King's Road, Quarry Bay, Hong Kong
10, Teban Gardens Crescent, Singapore 2260

