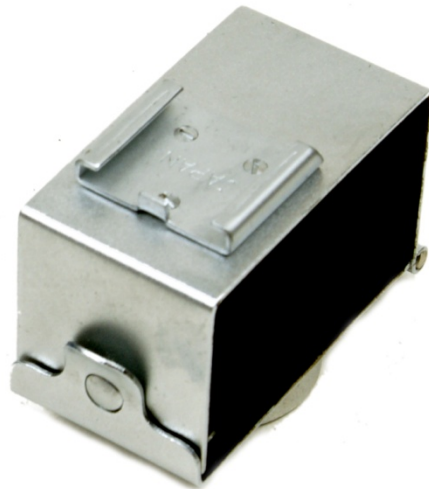
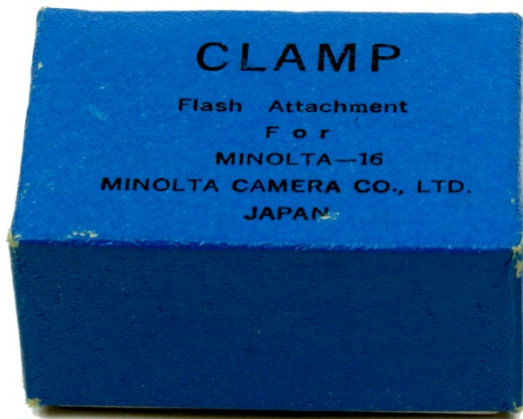


MINOLTA 16 CLAMP

1958



Serial Nr. no
Minolta Code: 6202

Characteristics and Functions

Minolta Clamp is an accessory for micro cameras dedicated to the Minolta 16 that allows you to apply the flash to the camera. In the lower part it is provided with a thread for the use of the tripod. It can also be adapted to the subsequent Minolta 16 II model (1960) as the devices have the same physiognomy and the same dimensions; in fact, the product is the same, but the packaging and indication have been changed: Minolta Clamp for Minolta 16 blue packaging, Minolta Clamp for Minolta 16 II yellow and black packaging.
Weight 34g. Length 48mm. Width 25mm. Height 36mm.