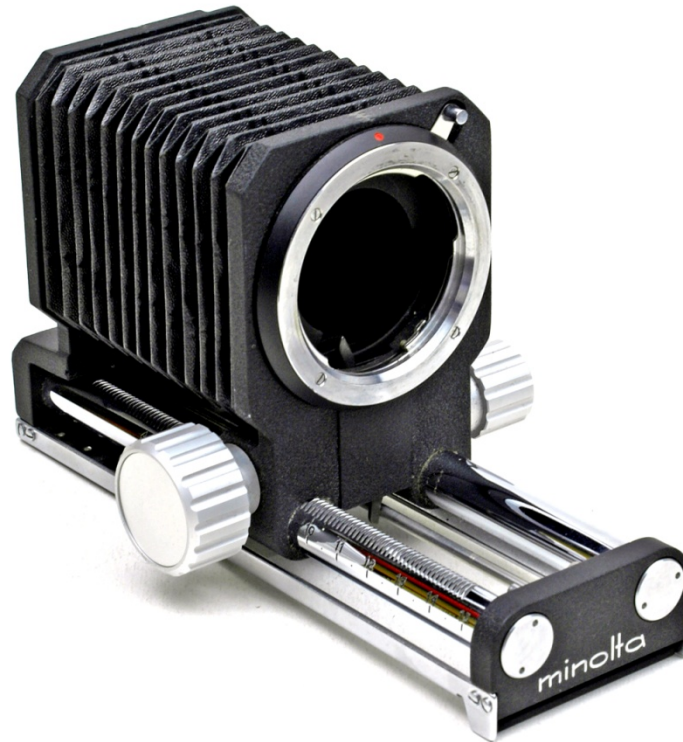


MINOLTA AUTO BELLOWS I



Serial Nr. no
Minolta Code: 8319

Characteristics and Functions

The Minolta Auto Bellows I was introduced in 1968. This extension bellows combines economical yet precise construction with automatic coupling of the working diaphragm. The continuous magnification ratio ranges from 0.8x to 3.1x with a 50mm lens. The creation of a bellows with double focusing rail allows you to precisely calibrate the extension in order to obtain a faster and more accurate focusing. The Focusing Rail AB I is applicable to Auto Bellows I, to which you can connect other accessories such as the slide player (Slide Copy Unit AB I).

Weight 635g. Length 170mm .; width 100mm .; height 101mm.